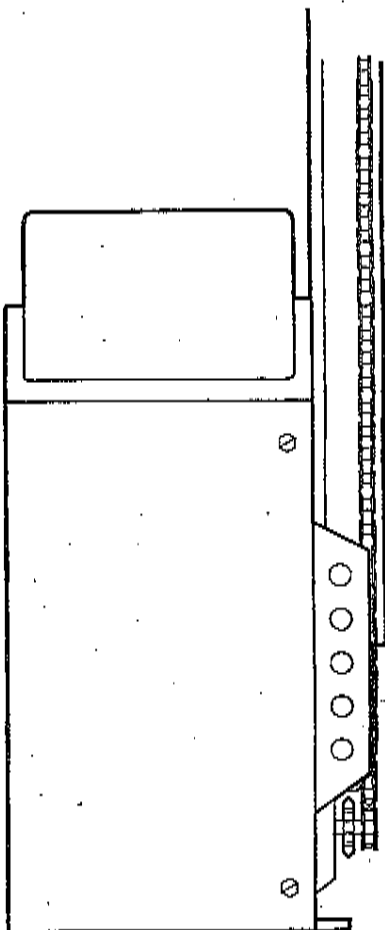
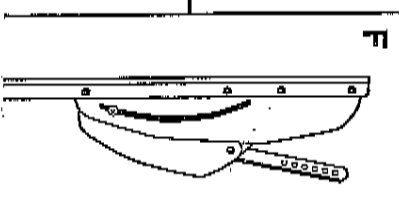
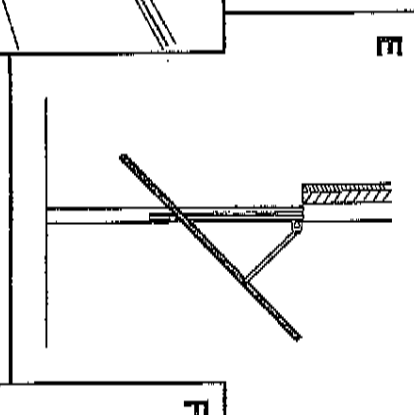
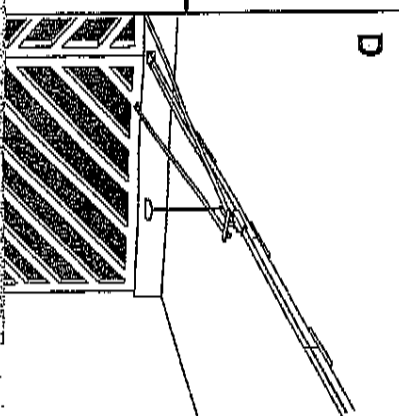
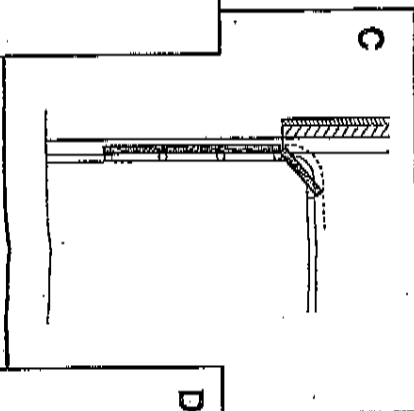
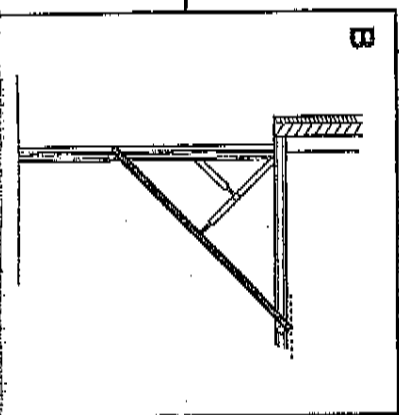
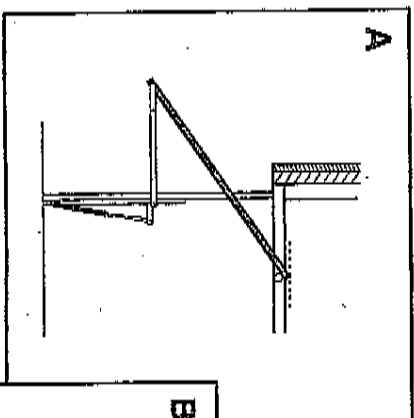


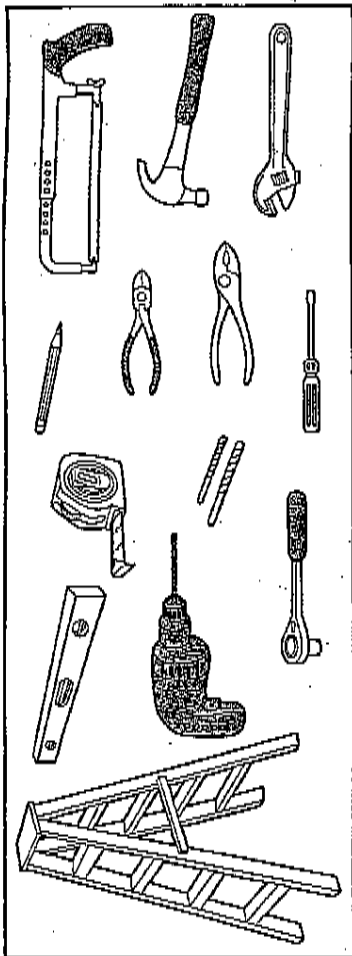
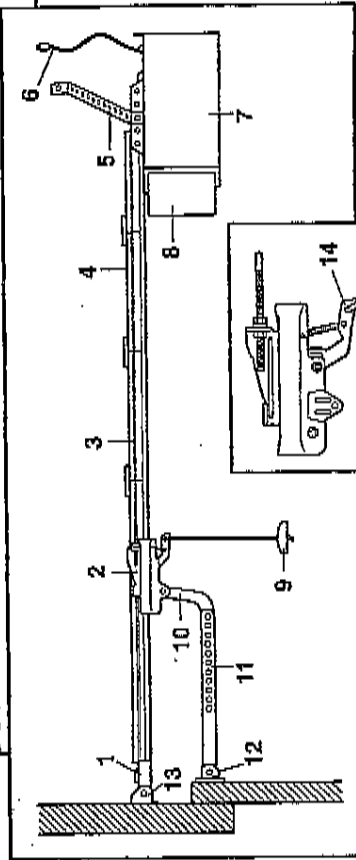
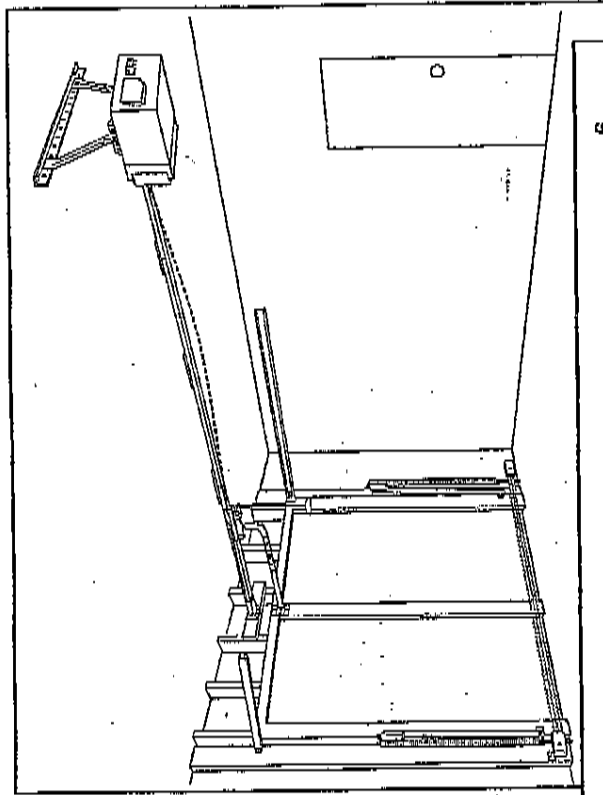
- Illustrations -
 - Abbildungen -
 - Figures -
 - Illustration -
 - Ilustraciones -
 - Kuvut -
 - Σχήμα -
 - Illustrazioni -
 - Afbeeldingen -
 - Illustrasjon -
 - Figuras -
 - Bild. -
- Garage Door Operator Model 420E; 420EA; 420EGB
 Garagentoröffner Modell 420E
 Modèle 420E de ouvre-porte de garage
 Model 420E Garageportsåbner
 Abridor de la puerta de garage, Modelo 420E
 Autotallin oven avaaja, Malli 420E
 ΑΝΟΙΓΜΑΤΟΣ ΠΚΑΡΑΖΟΠΤΙΑΣ ΜΟΝΤΕΛΟ 420E
 Apriporta per garage Modello 420E
 Model 420E Garagedeuropener
 Garasjeportåbner, Modell 420E
 Operador automático de porta - Modelo 420E
 Garagedörröppnare Modell 420E



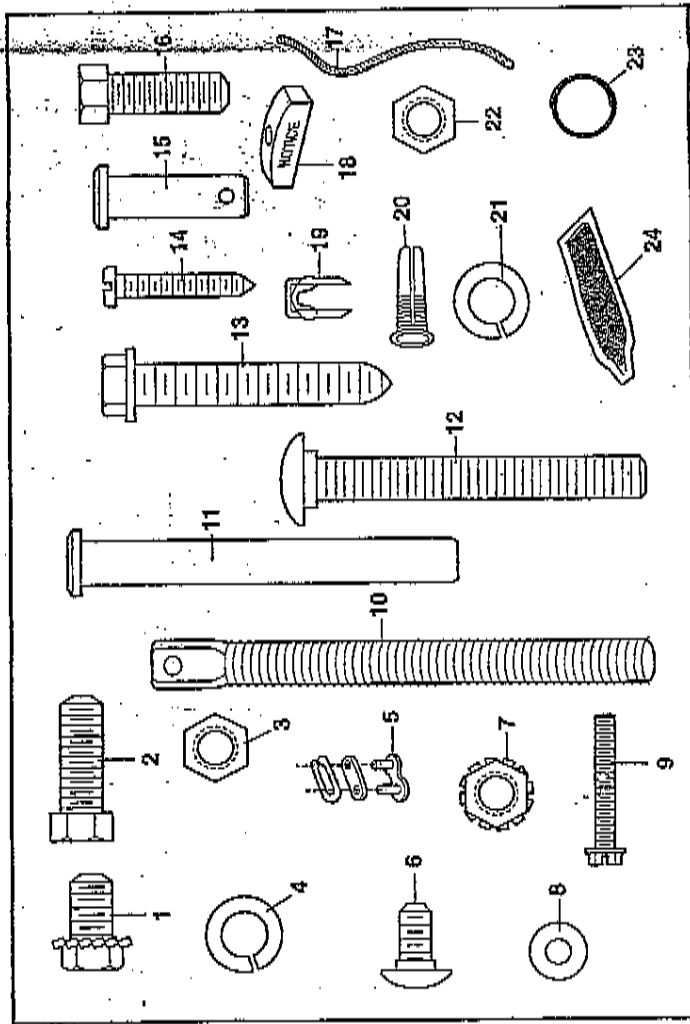
1



4

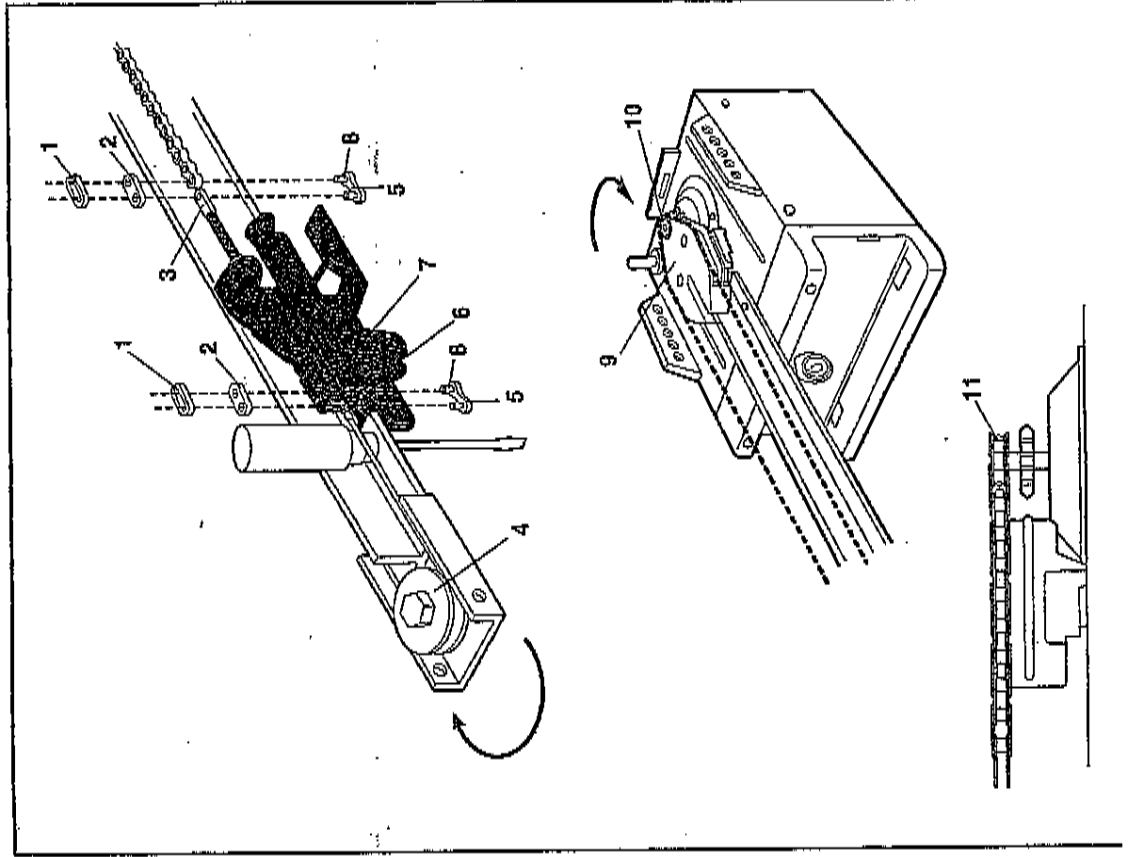


2

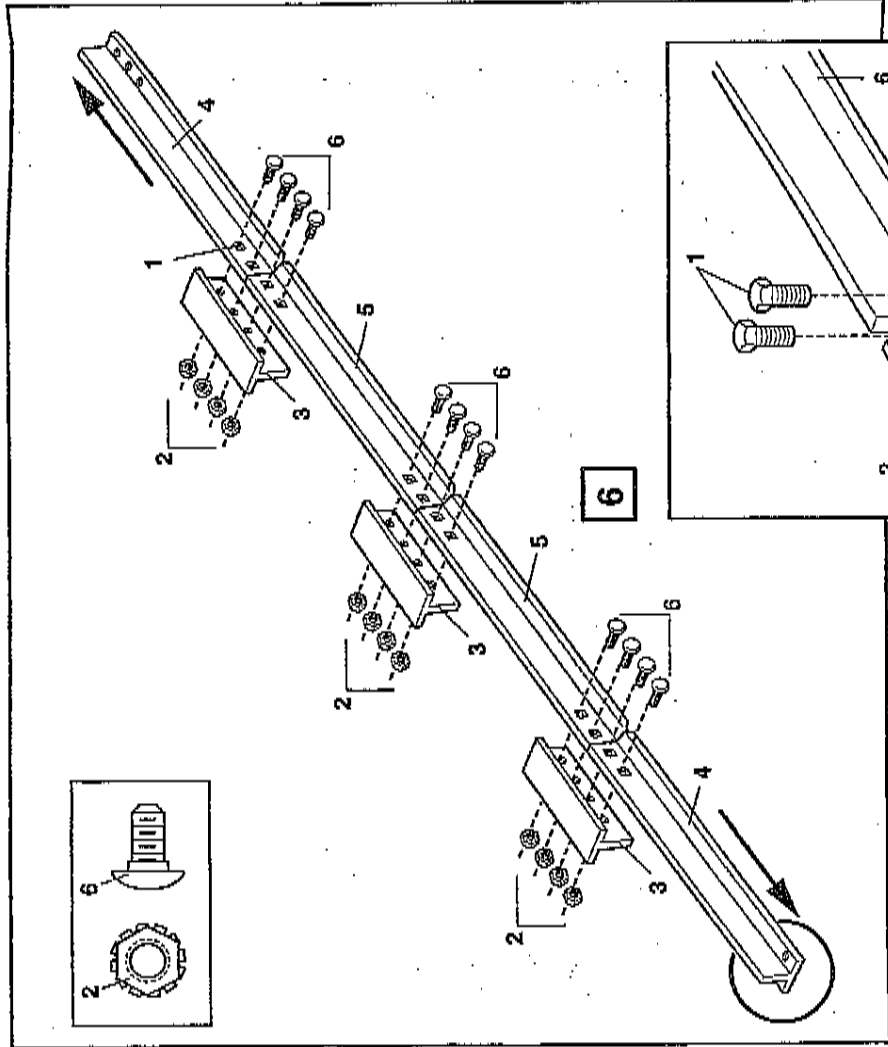


3

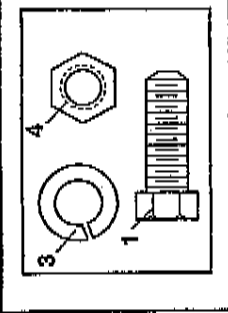
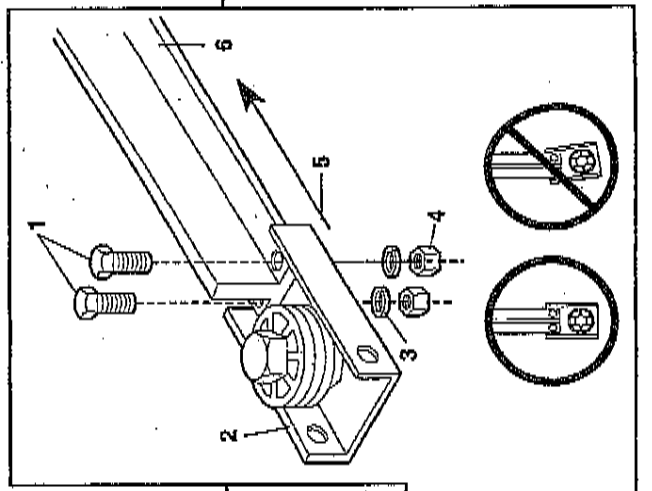
9

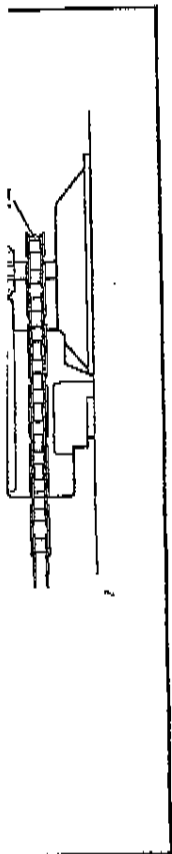


5

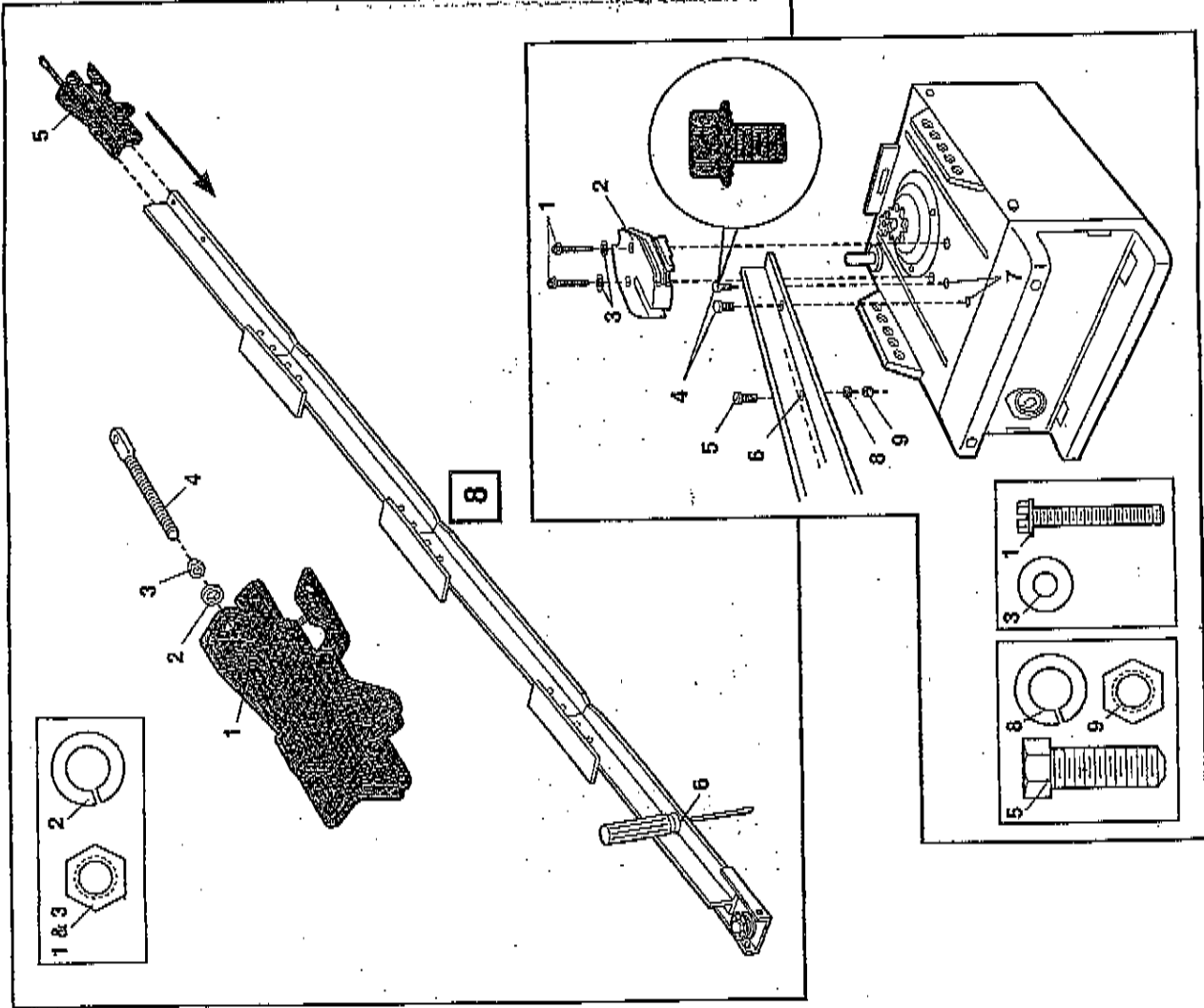
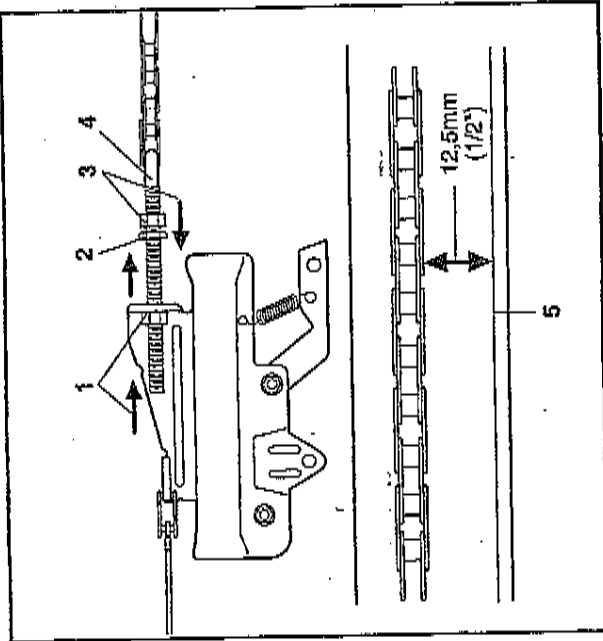


6



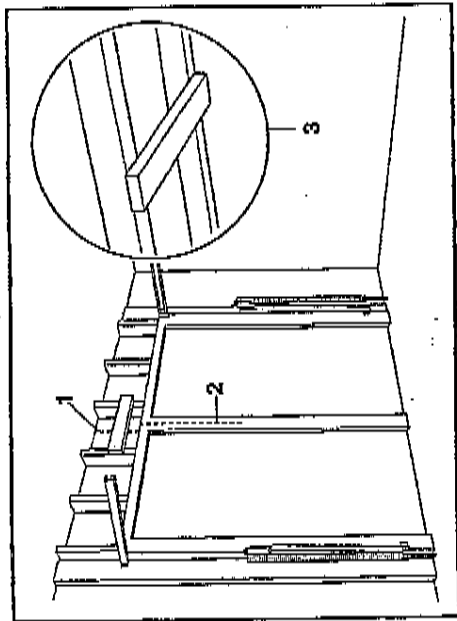


10

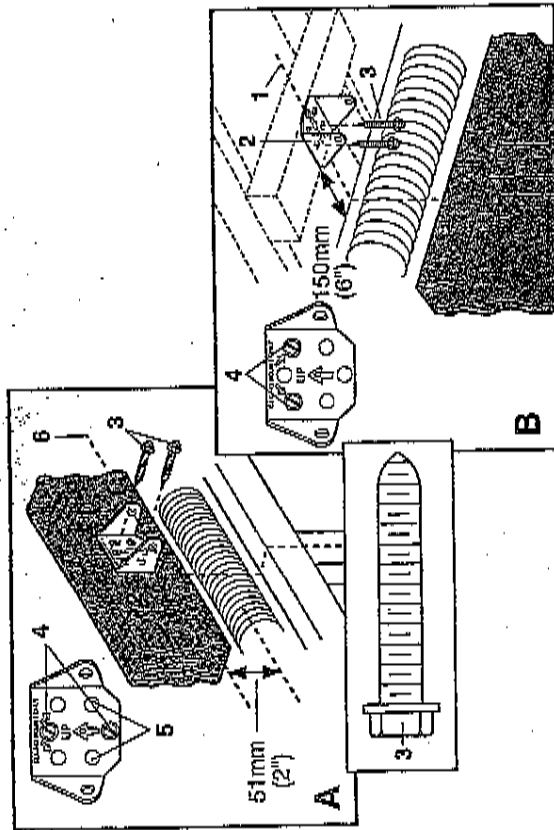


7

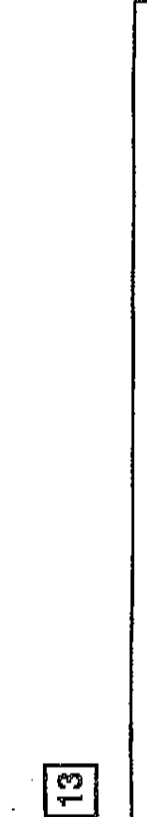
11



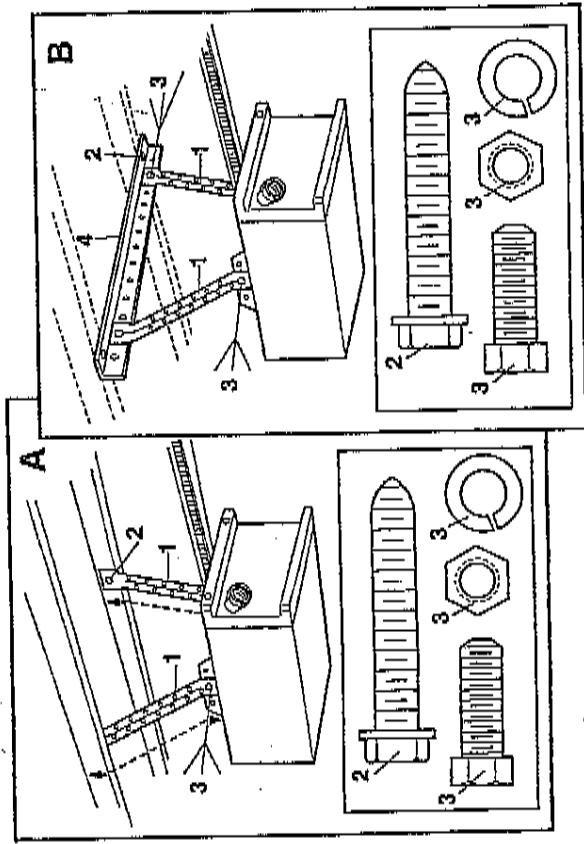
12



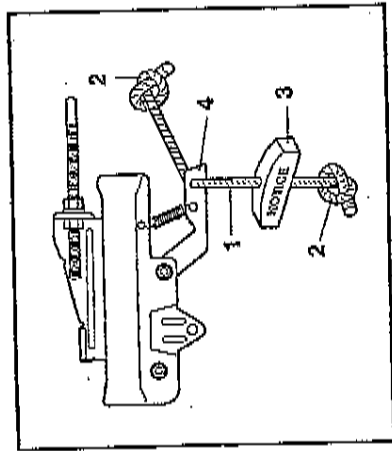
13



15

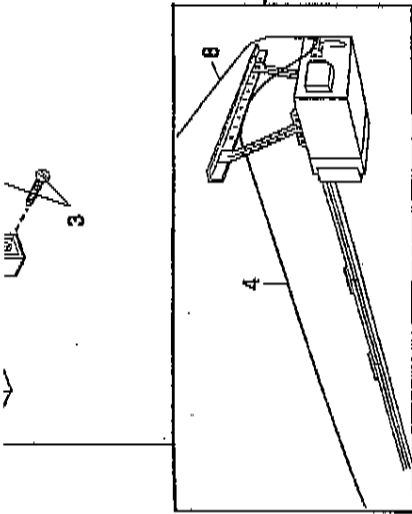
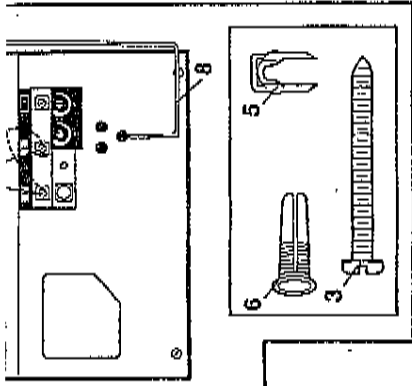


16

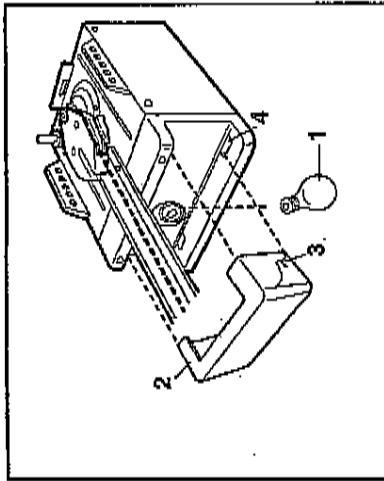


17

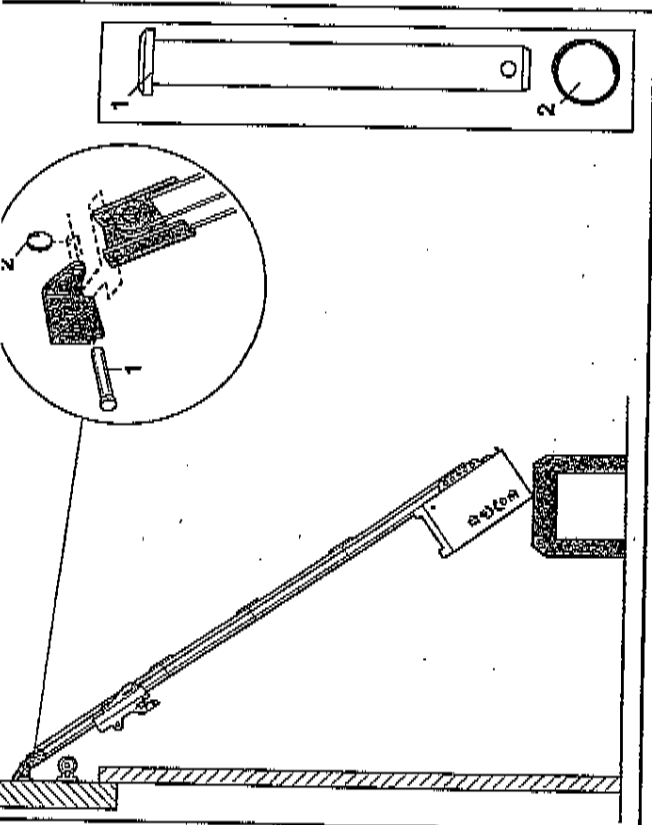
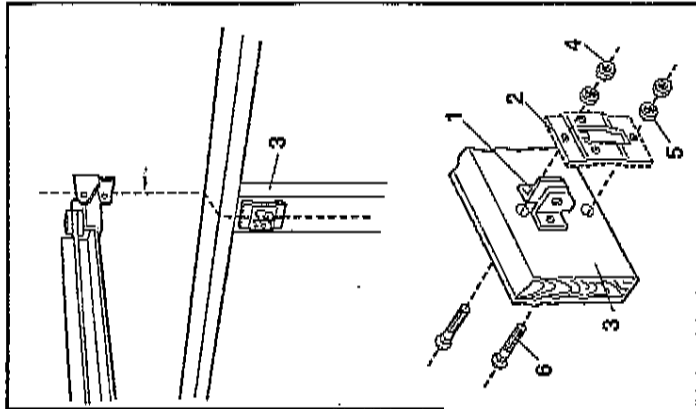




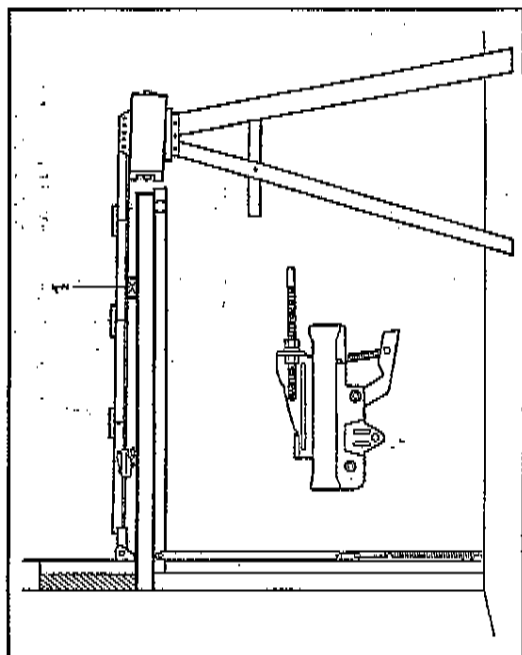
18



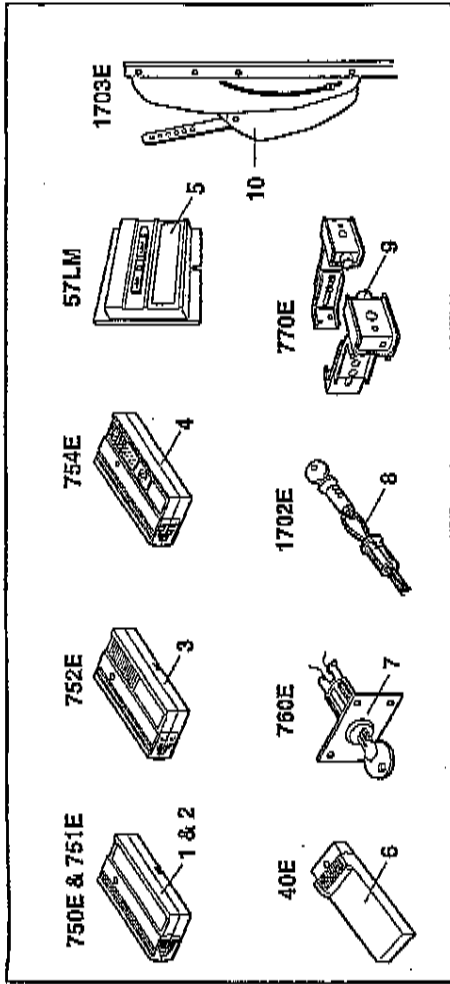
19



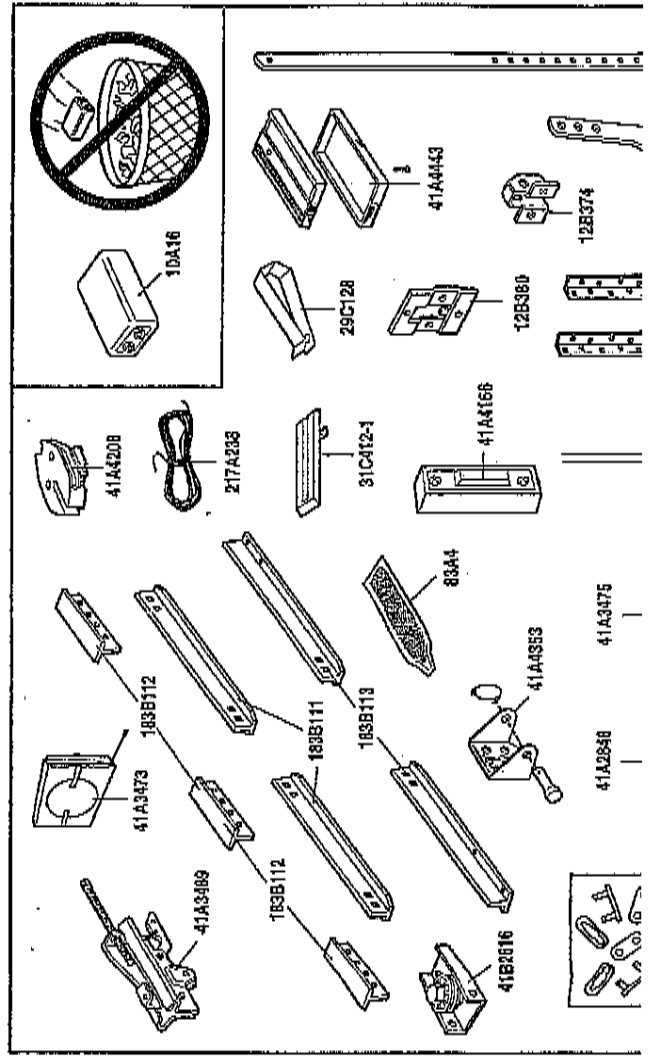
14



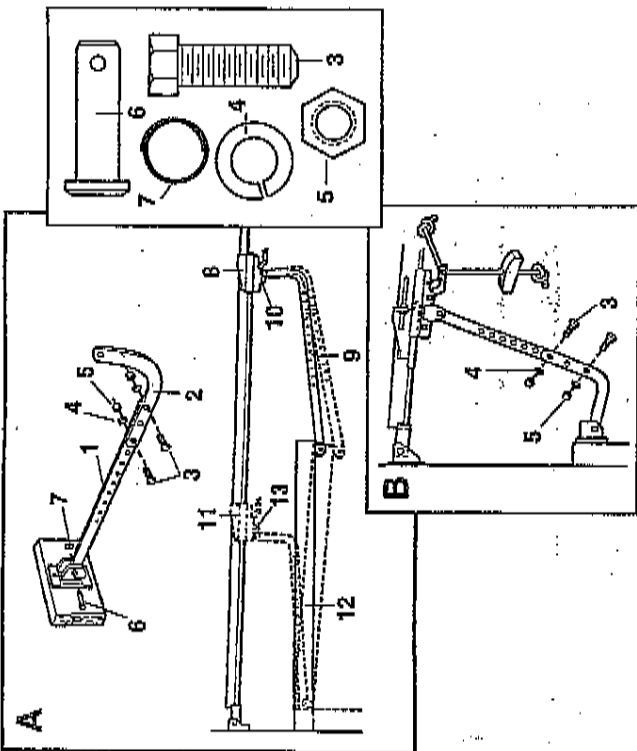
26



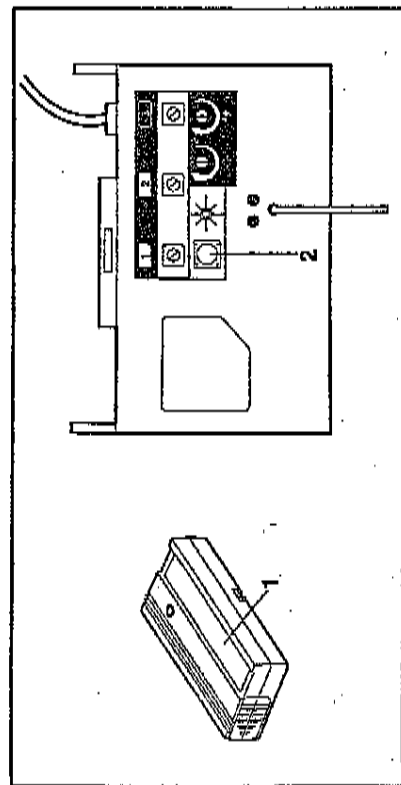
27



20



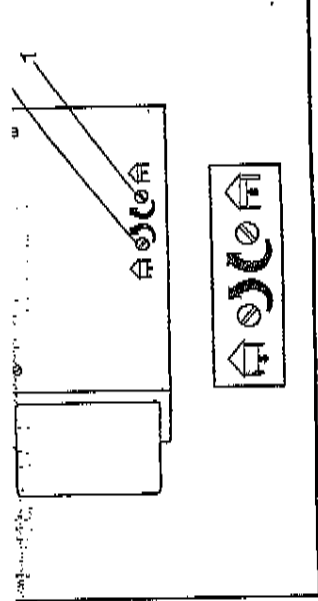
21



22

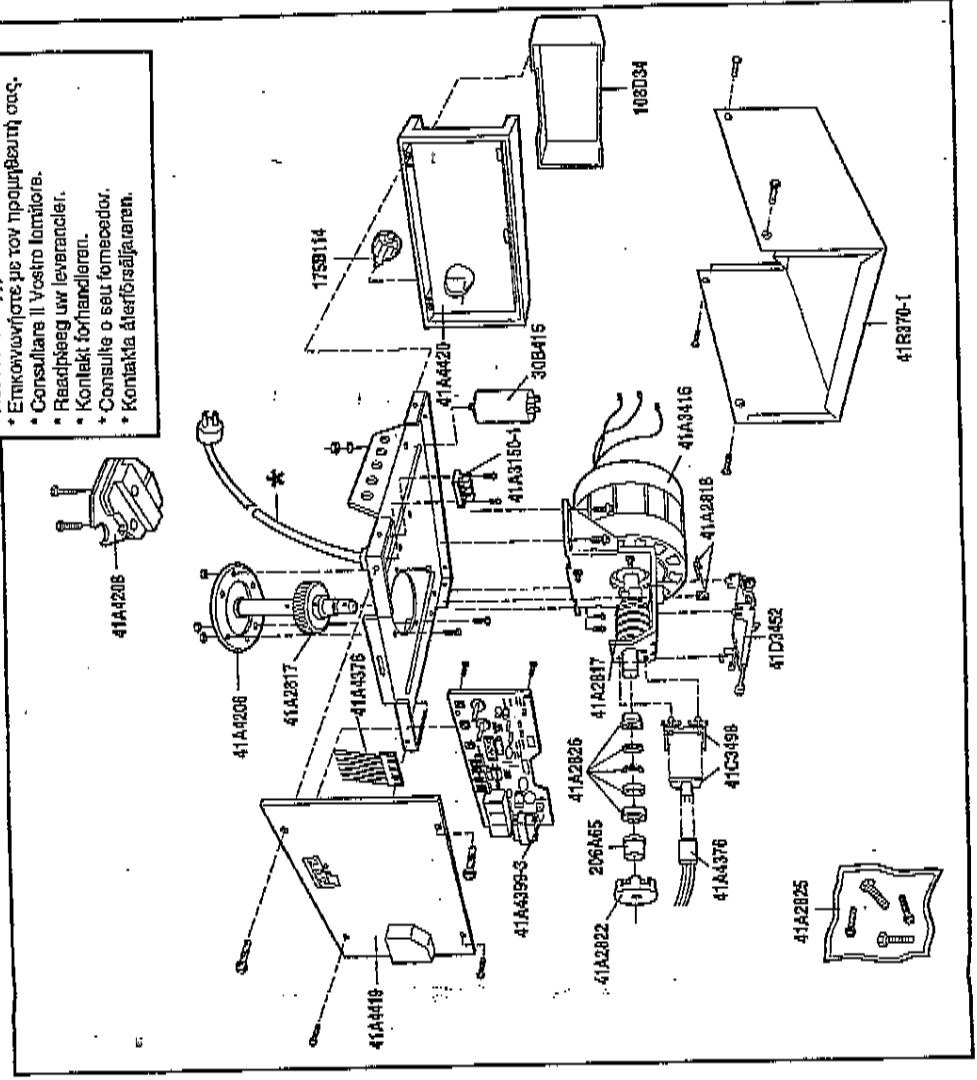


1A895 41A2820 12B850 178835 178B34



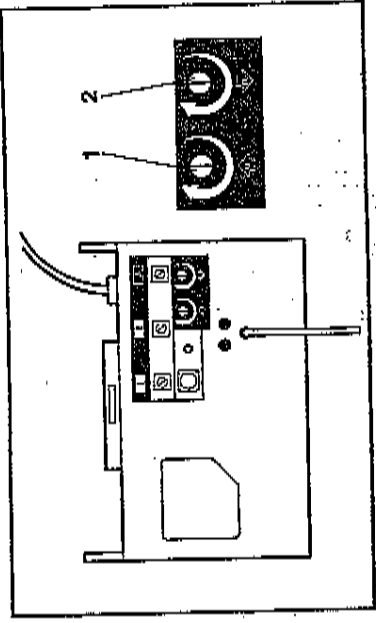
28

* See your dealer.
 * Bitte an Händler wenden.
 * Consultez votre détaillant.
 * Henverid dög til forhandleran.
 * Consulle con su distribuidor.
 * Neuyottele myyjäilikkään kanssa.
 * Επικοινωνήστε με τον προμηθευτή σας.
 * Consultare il vostro fornitore.
 * Readipsägg uw leverancier.
 * Kontakt forhandleren.
 * Consulte o seu fornecedor.
 * Kontaktka älsför säljaren.

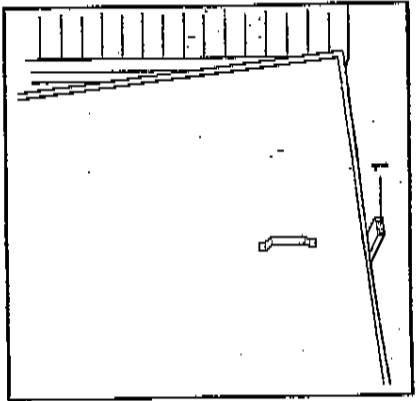


114A1724B

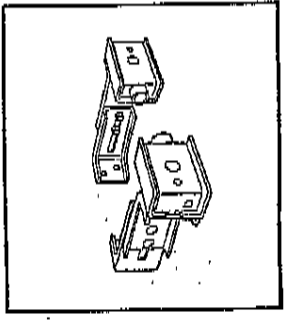
23

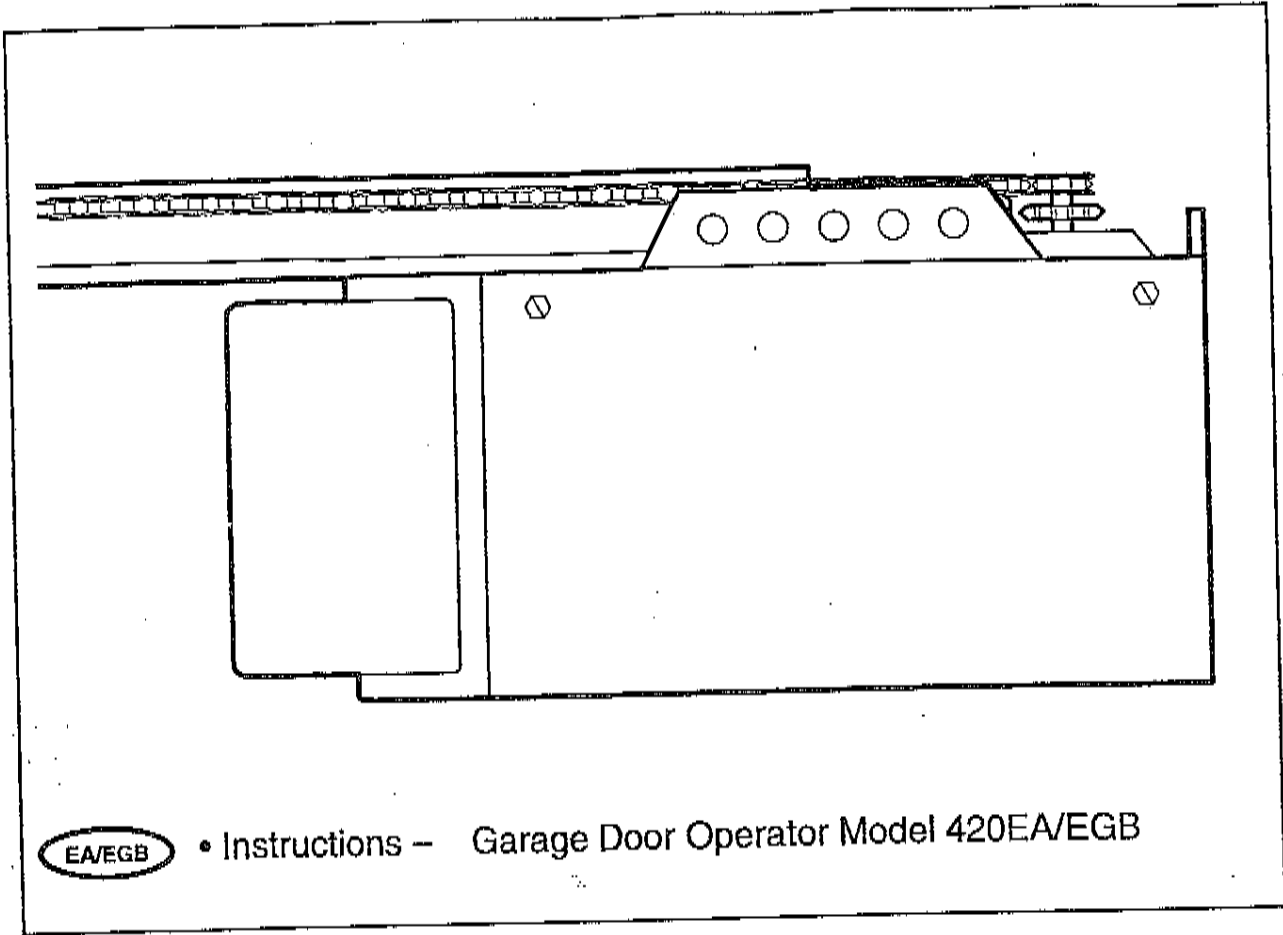


24



25





EA/EGB

• Instructions – Garage Door Operator Model 420EA/EGB

START BY READING THESE IMPORTANT SAFETY RULES



These safety alert symbols mean **Caution** – a personal safety or property damage instruction. Read these instructions carefully. This garage door operator is designed and tested to offer reasonable safe service provided it is installed and operated in strict accordance with the following safety rules.



Failure to comply with the following instructions may result in serious personal injury or property damage.

Caution: If your garage has no service entrance door, Model 1702E Outside Quick Release must be installed. This accessory allows manual operation of the garage door from outside in case of power failure.



Keep garage door balanced. Sticking or binding doors must be repaired. Garage doors, door springs, cables, pulleys, brackets and their hardware are under extreme tension and can cause serious personal injury. **Do not attempt to loose, move or adjust them.** Call for garage door service.



Do not wear rings, watches or loose clothing while installing or servicing a garage door operator.



To avoid serious personal injury from entanglement, **remove all ropes connected to the garage door** before installing the door operator.



Installation and wiring must be in compliance with your local building and electrical codes. **Connect the power cord only to properly earthed mains.**



Lightweight doors or fiberglass, aluminum or steel must be substantially reinforced to avoid door damage. (See page 4.) The best solution is to check with your garage door manufacturer for an operator installation reinforcement kit.



The safety reverse system test is very important. Your garage door **MUST** reverse on contact with a 1" (25mm) obstacle placed on the floor. Failure to properly adjust the operator may result in serious personal injury from a closing garage door. **Repeat the test once a month and make any needed adjustments.**



Do not use the force adjustments to compensate for a binding or sticking garage door. Excessive force will interfere with the proper operation of the Safety Reverse System or damage the garage door.



Fasten the caution label adjacent to the lighted door control button as a reminder of safe operating procedures.



Disengage all existing garage door locks to avoid damage to garage door.



Install the lighted door control button (or any additional push buttons) **in a location where the garage door is visible, but out of the reach of children. Do not allow children to operate push button(s) or remote control(s).** Serious personal injury from a closing garage door may result from misuse of the operator.



CAUTION: Activate operator only when the door is in full view, free of obstructions and operator is properly adjusted. No one should enter or leave the garage while the door is in motion. Do not allow children to play near the door.



Use manual release only to disengage the trolley and, if possible, only when the door is closed. **Do not use the red handle to pull the door open or closed.**



Disconnect electric power to the garage door operator before making repairs or removing covers.

CONTENTS

SAFETY RULES: Page 1

DOOR TYPES: Page 1 – Illustration **1**

TOOLS REQUIRED: Illustration **2**

HARDWARE PROVIDED:

Page 1 – Illustration **3**

BEFORE YOU BEGIN: Page 2

COMPLETED INSTALLATION:

Page 2 – Illustration **4**

ASSEMBLY: Page 2 – Illustrations **5** – **10**

INSTALLATION:

Pages 3-4 – Illustrations **11** – **20**

PROGRAMMING THE CODE:

Page 4 – Illustration **21**

ADJUSTMENT:

Pages 4-5 – Illustrations **22** – **24**

INSTALL THE PROTECTOR

(Optional): Page 5 – Illustration **25**

OPERATION OF YOUR OPERATOR: Page 5

CARE OF YOUR OPERATOR: Page 5

MAINTENANCE OF YOUR OPERATOR: Page 6

PROBLEMS: Page 6

ACCESSORIES: Page 7 – Illustration **26**

SPECIFICATIONS: Page 7

WARRANTY: Page 7

RAIL ASSEMBLY & INSTALLATION

PARTS LIST: Illustration **27**

OPERATOR PARTS LIST: Illustration **28**

DOOR TYPES – **1**

- A. One-Piece Door with Horizontal Track Only
- B. One-Piece Door with Horizontal and Vertical Track – Special door arm (F) required. See your dealer.
- C. Sectional Door with Curved Track – See **20** B – connect door arm.
- D. Double-wing door – Special door arm required. See your dealer.
- E. Canopy door – Special door arm (F) required. See your dealer.

HARDWARE PROVIDED – **3**

Assembly Hardware:
Kit #41A2848

- (1) Washered Screws (2)
- (2) Hex Screws (3)
- (3) Nuts (5)
- (4) Lock Washers (4)
- (5) Master Links (2)
- (6) Carriage Bolts (12)
- (7) Lock Nuts (12)
- (8) Flat Washers (2)
- (9) Hex Screws (2)
- (10) Trolley Threaded Shaft (1)
- (11) Clevis Pin (1)

Installation Hardware:
Kit #41A3535

- (12) Carriage Bolts (2)
- (13) Lag Screws (4)
- (14) Screws (2)
- (15) Clevis Pins (2)
- (16) Hex Screws (4)
- (17) Rope
- (18) Handle
- (19) Insulated Staples
- (20) Anchors (2)
- (21) Lock Washers (6)
- (22) Nuts (6)
- (23) Ring Fasteners (3)
- (24) Rail Grease

BEFORE YOU BEGIN:

1. Look at the wall or ceiling above the garage door. The header bracket **must** be securely fastened to structural supports.
2. Do you have a finished ceiling in your garage? If so, a support bracket and additional fastening hardware (not supplied) may be required.
3. Depending on your door's construction, you might need a special door arm. See your dealer.
4. Do you have an access door in addition to the garage door? If not, Model 1702E Outside Quick Release Accessory is required.

COMPLETED INSTALLATION -- 4

As you proceed with the assembly, installation and adjustment procedures in this manual, you may find it helpful to refer back to this illustration of a completed installation.

- | | |
|--------------------------|--|
| (1) Cable Pulley Bracket | (9) Manual Release Rope & Handle |
| (2) Trolley | (10) Curved Door Arm |
| (3) Chain & Cable | (11) Straight Door Arm |
| (4) T-rail | (12) Door Bracket & Plate |
| (5) Hanging Bracket | (13) Header Bracket |
| (6) Power Cord | (14) Trolley Release Arm |
| (7) Operator | (15) Pull Down & Back (Towards Operator) |
| (8) Light Lens | |

ASSEMBLY SECTION 5 - 10

Important: If you have a canopy or dual-track door, you need to use the instructions packed with the Chamberlain Arm™ Accessory in conjunction with this Owner's Manual when assembling the T-rail.

ASSEMBLE THE T-RAIL -- 5

Place rail pieces on flat surface for assembly. The center sections with tapered ends (5) are interchangeable. So are the end sections (4). Connect the braces (3) and lock nuts (2) from one side of the rails and insert the carriage bolts (6) from the opposite side. Then the trolley will not hit the lock nuts when it is installed.

The square necks on the carriage bolts must be seated in square holes in rail sections (1).

For canopy and dual-track doors, continue with the instructions in this manual until Step 12.

INSTALL THE CABLE PULLEY BRACKET -- 6

Position cable pulley bracket (2) on the front section of T-rail (6). Fasten securely with: screws (1); lock washers (3) and nuts (4).

When tightening the screws, be sure to keep bracket parallel to rail (5). Otherwise, rail may bow when operator is activated.

INSTALL THE TROLLEY -- 7

Insert a screwdriver into trolley "stop" hole in the front end of T-rail (6). Attach trolley threaded shaft (4) to the trolley with: lock washer (2), and nuts (1 & 3). Slide trolley (5) along rail to the "stop".

Note: If the trolley hits against the nuts on T-rail, review rail assembly and reposition hardware.

FASTEN T-RAIL & ATTACH CHAIN SPREADER -- 8

Place packing material under the operator to protect the operator cover. For convenience, place a support under the cable pulley bracket end of rail.

Remove the (2) washered screws (4) from the top of the operator. Align holes in back end of the T-rail with holes in operator (7).

Fasten the rail to the operator with the same washered screws and tighten securely. **Caution: Use only those screws! Use of any other screws will cause serious damage to the door operator.**

Attach the chain spreader (2) with hex screws (1) and flat washers (3).

Insert a hex screw (5) into trolley stop hole in T-rail (6). Tighten securely with a lock washer (8) and nut (9).

INSTALL THE CHAIN/CABLE -- 9

Do not remove chain/cable from carton.

Dispense a few inches of cable from carton and fasten to trolley with a master link.

Master Link Procedure: Push pins of master link bar (5) through cable loop (6) and hole in front end of trolley (7). Push cap (2) over pins (8) and onto notches. Slide clip-on spring (1) over cap and onto pin notches until both pins are securely locked in place.

Caution: Keep chain taut during installation to help prevent kinking.

With the trolley against screwdriver, dispense chain/cable around pulley (4). Proceed back around a groove in chain spreader (9). (Chain installation for either the 6-tooth sprocket (11) or the 8-tooth sprocket (12) is based on door type.) **All one-piece doors should use the 6-tooth sprocket.** The operator sprocket teeth (10) must engage the chain.

Use the second master link to connect the chain to the flat end of the threaded shaft (3).

Check to make sure the chain is not twisted.

Remove the screwdriver.

TIGHTEN THE CHAIN/CABLE -- 10

Spin inner nut (3) and lock washer (2) down threaded shaft (4).

Check to make sure chain is not twisted.

To tighten the chain, turn outer nut (1) in the direction shown. As you turn the nut, keep the chain from twisting.

When chain is approximately 1/2" (12.5mm) above the base of the T-rail (5) at midpoint, re-tighten inner nut.

Sprocket noise can result if chain is either too loose or too tight.

When installation is complete, you may notice some chain droop with the door closed. This is normal. If the chain returns to the position described above when the door is open, **do not re-adjust the chain.**

ASSEMBLY OF YOUR OPERATOR IS NOW COMPLETE.

OPERATOR - 15

Operator must be securely fastened to a structural support of garage.

Two representative installations are shown. Yours may be different. Hanging brackets (1) should be angled (Figure A) to provide rigid support. On finished ceilings, (Figure B) attach a sturdy metal bracket (not supplied) (4) to a structural support before installing the operator.

On each side of operator measure the distance from the operator to the structural support.

Cut both pieces of the hanging bracket to required lengths. Flatten one end of each bracket and bend or twist to fit the fastening angles. Do not bend at the bracket holes. Drill 3/16" (4,8mm) pilot holes in the structural supports. Attach flattened ends of brackets to supports with lag screws (2).

Lift operator and fasten to hanging brackets with screw, lock washer and nut (3). Check to make sure T-rail is centered over the door. REMOVE 1" (25mm) board. Operate door manually. If door hits the rail, raise header bracket.

Grease the top and underside of rail surface on which the trolley slides. A tube of grease is supplied.

ATTACH MANUAL RELEASE ROPE & HANDLE - 16

Thread one end of rope (1) through hole in top of red handle so "NOTICE" reads right side up as shown (3). Secure with an overhand knot (2). Knot should be at least 1" (25mm) from end of the rope to prevent slipping.

Thread other end of rope through hole in release arm of the outer trolley (4). Adjust rope length so that handle is 6 feet (1,8m) above the floor. Secure with an overhand knot.

Note: If it is necessary to cut rope, heat seal cut end with a match or lighter to prevent fraying.

CONNECT ELECTRIC POWER

TO AVOID INSTALLATION DIFFICULTIES, DO NOT RUN THE GARAGE DOOR OPERATOR UNTIL INSTRUCTED TO DO SO.

Connect the operator to a mains which is properly EARTHED according to the wiring instruction tag attached to power cord (and as specified by local code).

Connect the door operator only to an outlet controlled by a double pole switch.

INSTALL THE LIGHTED DOOR CONTROL BUTTON - 17

Locate push buttons where the garage door is visible, away from door and door hardware and out of the reach of children.

Serious personal injury from a moving garage door may result from misuse of operator. Do not allow children to operate the lighted door control button or remote control transmitter.

Fasten the caution label on the wall near the lighted door control button as a reminder of safe operating procedures.

There are 2 screw terminals (1) on the back of the lighted door control button (2). Strip about 1/4" (6mm) of insulation from bell wire (4). Separate wires enough to connect the white/red wire to terminal screw 1 (1) and the white wire to terminal screw 2 (1).

Fasten the lighted door control button to an inside garage wall with sheet metal screws (3) provided. Drill 5/32" (4mm) holes and use anchors (6) if installing into drywall. A convenient place is beside the service door and out of reach of children.

Run the bell wire up the wall and across the ceiling to the garage door operator. Use insulated staples (5) to secure wire. The receiver terminal screws (7) are located on the back panel of the operator. Connect the bell wire to the terminal screws as follows: white/red to 1 and white to 2. Make sure antenna wire (8) on back panel of operator is fully extended across the ceiling, at least 2 feet (60cm) away from existing wiring.

HEADER BRACKET - 11

Header bracket must be rigidly fastened to a structural support of garage. Reinforce the wall or ceiling with a board if necessary. Failure to comply may result in improper operation of safety reverse system.

Header bracket can attach the header bracket either to the header wall (1) or to the ceiling (3). Follow the instructions which will work best for your particular requirements.

With the door closed, mark the vertical centerline (2) of the garage door. Extend line onto header wall above the door.

Open door to highest point of travel. Draw an intersecting horizontal line on header wall 2" (51mm) above high point to provide travel clearance for top edge of door.

INSTALL THE HEADER BRACKET - 12

A. Wall Mount: Center the bracket (2) on the vertical guideline (1) with the bottom edge of the bracket on the horizontal line (6) (with the arrow pointing toward the ceiling).

Mark either set of bracket holes (4 or 5). Do not use the holes designated for ceiling mount. Drill 3/16" (4,5mm) pilot holes and fasten the bracket securely with lag screws (3).

B. Ceiling Mount: Extend vertical guideline (1) onto the ceiling. Center the bracket (2) on the vertical mark no more than 6" (150mm) from the wall. Make sure the arrow is pointing toward the wall.

Mark holes designated for ceiling mount only (4). Drill 3/16" (4,5mm) pilot holes and fasten bracket with lag screws (3).

ATTACH T-RAIL TO HEADER BRACKET - 13

Position operator on garage floor below the header bracket. Use packing material to protect the cover.

Note: To enable the T-rail to clear sectional door springs, it may be necessary to lift operator onto a temporary support.

The operator must either be secured to a support or held firmly in place by another person.

Raise T-rail until cable pulley and header brackets come together. Join with clevis pin (1). Insert ring fastener (2) to secure.

POSITION THE OPERATOR - 14

Note: A 1" (25mm) board (1) is convenient for setting an ideal door-to-T-rail distance (unless headroom is not sufficient).

Raise the operator onto a stepladder. Open garage door. Place a 1" (25mm) board (1) laid flat on the top section of door near the centerline as shown. Rest the T-rail on the board.

If the raised door hits the trolley, pull down on the trolley release arm to disconnect the inner and outer trolley sections. The trolley can remain disconnected until connecting door arm to trolley is completed.

ACTIVATION OF THE LIGHTED DOOR CONTROL BUTTON

Press to open or close the door. Press again to reverse the door during the closing cycle or to stop the door during opening cycle.

WIRING INSTRUCTIONS FOR ACCESSORIES

Keyless Entry System – To operator terminals: Red-1 and White-2
Outside Keylock – To operator terminals: Red-1 and White-2
Protector System™ – To operator terminals: White-2 and Black-3
Wall Control Panel – To operator terminals: Red-1 and White-2

INSTALL THE LIGHT AND LENS – 18

Install a 40 watt maximum light bulb (1) in the socket as shown. The light will turn on and remain lit for 4-1/2 minutes when power is connected. After 4-1/2 minutes it will turn off.

If bulb burns out prematurely due to vibration, replace with a bulb specifically packaged for "Garage Door Operators".

Apply slight pressure on sides of the lens (2) and slide tabs (3) into slots (4) in the end panel. Reverse the procedure to remove the lens.

FASTEN DOOR BRACKET & PLATE – 19

If yours is a canopy or dual-track style garage door, a door arm conversion kit is required. Follow the installation instructions included with the replacement door arm.

Exercise care in removing and assembling arm conversion kit. Keep fingers away from the sliding parts.

All One-Piece Door Installation Procedure:

Door bracket (1) has left and right side fastening holes. Assemble and install the door bracket and plate (2) if your installation requires top and bottom fastening holes.

- Center bracket (with or without plate as required) at the top of inside face of door (3) as shown. Mark holes.
- Drill 5/16" (8mm) holes and fasten the door bracket with nut (4), lock washer (5) and carriage bolt (6).

CONNECT DOOR ARM TO TROLLEY – 20**All One-Piece Door Installation Procedure:**

Connect straight door arm (1) and curved door arm sections (2) to obtain the longest possible length with hardware (3, 4 & 5). With door closed, connect straight door arm section to door bracket with a clevis pin (6). Secure with a ring fastener (7).

Before connecting door arm to trolley, adjust travel limits. Limit adjustment screws are located on left side panel.

Open Door Adjustment: Decrease up limit. Turn up limit adjustment screw counterclockwise 5-1/2 turns.

Press door control button. Trolley will travel to full open position (8).

Manually raise door to open position (parallel to floor) and lift door arm (9) to trolley. The arm should touch trolley just in back of door arm connector hole (10) as shown in solid line drawing. Increase up limit if necessary. One full turn equals 2" (51mm) of door travel.

Closed Door Adjustment: Decrease down limit. Turn down limit adjustment screw clockwise 5 complete turns.

Press door control button. Trolley will travel to full closed position (11).

Manually close door and lift door arm (12) to trolley. The arm should touch trolley just ahead of door arm connector hole (13) as shown in dotted line drawing. Decrease down limit if necessary. One full turn equals 2" (51mm) of door travel.

Connect Door Arm to Trolley: With door closed, connect curved arm to trolley with remaining clevis pin. Secure with ring fastener. **Note:** Lift door slightly to make connection if necessary.

Run operator through a complete travel cycle. If door has a slight "backward" slant in full open position, decrease up limits until door is parallel to floor.

PROGRAM YOUR OPERATOR & REMOTE – 21

Activate the operator only when door is in full view, free of obstruction and properly adjusted. No one should enter or leave garage while door is in motion. Do not allow children to operate push button(s) or remote(s). Do not allow children to play near the door.

Your garage door operator receiver and remote control transmitter are set to a matching code. If you purchase additional remote controls, the garage door operator must be programmed to accept the new remote code.

Program the Receiver to Match Additional Remote Control Codes

- Press and hold the remote control push button (1).
- Press and release the "Smart" button (2) on the back panel of the operator. The operator light will flash once. Release the remote push button.

Now the operator will activate when the remote control push button is pressed.

If you release the remote control push button before the operator light flashes, the operator has not learned the code.

To Erase all Remote Control Codes

- Press and hold the "Smart" button on the operator panel until the indicator light turns off (about 6 seconds). All the codes the operator has learned will be erased.
- To reprogram, repeat Steps 1 and 2 for each remote control in use.

ADJUSTMENT SECTION 22 – 24**LIMIT ADJUSTMENT – 22**

Run the operator through a complete travel cycle. Limit adjustments are not necessary when the door opens and closes completely and doesn't reverse unintentionally in the fully closed position.

Situations requiring limit adjustment are listed below. Run the operator through a complete travel cycle after each adjustment.

Note: Repeated activation of the operator during adjustment procedures may cause motor to overheat and shut off. Allow a 15 minute cooling period after 5 continuous activation of the operator.

Read the following carefully before proceeding to Force Adjustment. Use a screwdriver to make limit adjustments.

If Door Doesn't Open Completely but Opens at Least 5 feet (1,5m): Increase up travel. Turn the up limit adjustment screw (1) clockwise. One turn equals 2" (51mm) of travel.

If door does not open at least 5 feet (1,5m): Adjust up (open) force as explained in Step 2.

If Door Doesn't Open Completely: If door arm is at maximum length, increase down travel. Turn down limit adjustment screw (2) counterclockwise. One turn equals 2" (51mm) of travel.

If the door still will not close completely, the header bracket is positioned too high.

If Operator Reverses in Fully Closed Position: Decrease down travel. Turn down limit adjustment screw (2) clockwise. One turn equals 2" (51mm) of travel.

If Door Reverses when Closing and there is no interference to Travel Cycle: Test door for binding. Pull manual release handle. Manually open and close door. If the door is binding, call for garage door service. If the door is not binding or unbalanced, adjust the down (close) force.

FORCE ADJUSTMENT - 23

Do not use force adjustments to compensate for a binding or sticking garage door. Excessive force will interfere with proper operation of safety reverse system or damage garage door.

Force Adjustment Controls (1 & 2) are located on the back panel of operator.

If the force adjustments are set too light, door travel may be interrupted by nuisance reversals in down direction and stops in up direction. Weather conditions can affect the door movement, occasional adjustment may be needed.

Maximum force adjustment range is 260 degrees, about 3/4 of a complete turn. Do not force controls beyond that point. Turn force adjustment controls with a screwdriver.

Test Down (Close) Force: Grasp the door handle or door bottom when door is about halfway through down (close) travel. Door should reverse. If the door is hard to hold or doesn't reverse, decrease down (close) force by turning the control (2) in a counterclockwise direction. Make 10 degree turn adjustments until door reverses normally. After each adjustment, run operator through a complete cycle.

If Door Doesn't Open at Least 5 feet (1,5m): Increase up (open) force by turning the control (1) in a clockwise direction. Make 10 degree turn adjustments until door opens completely. Re-adjust up limit if necessary. After each adjustment, run operator through a complete travel cycle.

If Door Reverses During Down (Close) Cycle: Increase down (close) force by turning the control (2) in a clockwise direction. Make 10 degree turn adjustments until door completes close cycle. After each adjustment, run the operator through a complete travel cycle.

TEST THE SAFETY REVERSE SYSTEM - 24

The safety reverse system test is important. Garage door must reverse on contact with a 1" (25mm) obstacle laid flat on the floor. Failure to properly adjust operator may result in serious personal injury from a closing garage door. Repeat test once a month and adjust as needed.

Procedure: Place a 1" (25mm) obstacle (1) laid flat on the floor under the garage door. Operate the door in the down direction. The door must reverse on the obstruction. If the door stops on the obstruction, it is not traveling far enough in the down direction. Increase the down limit by turning down limit adjustment screw counterclockwise 1/4 turn. Repeat test.

When the door reverses on the 1" (25mm) obstacle, remove the obstruction and run the operator through a complete travel cycle. Door must not reverse in closed position. If it does, adjust Limits and Force and repeat safety reverse test.

**INSTALL THE PROTECTOR (OPTIONAL) - 25
(See accessories)**

After operator has been installed and adjusted, The Protector System™ accessory can be installed. Instructions are included with this optional device.

The Protector System™ provides an additional measure of safety against a small child being caught under a garage door.

It uses an invisible beam which, when broken by an obstruction, causes a closing door to open and prevents an open door from closing and is strongly recommended for homeowners with young children.

ACTIVATION OF YOUR OPERATOR

Your operator can be activated by any of the following devices:

- **The Lighted Door Control Button.** Hold the button down until door starts to move.
- **The Outside Keylock or Keyless Entry System** (if you have installed either of these accessories).
- **The Remote Control Transmitter.** Hold the push button down until the door starts to move.

Opening the Door Manually:

Door should be fully closed if possible. Weak or broken springs could allow an open door to fall rapidly. Property damage or serious personal injury could result.

The door can be opened manually by pulling the release handle down and back (toward the operator). To reconnect the door, pull the release handle straight down.

Do not use the manual release handle to pull the door open or closed.

When the Operator is Activated by Remote Control or Lighted Door Control Button:

1. If open, the door will close. If closed, the door will open.
2. If closing, the door will reverse.
3. If opening, the door will stop (allowing space for entry and exit of pets and for fresh air).
4. If the door has been stopped in a partially open position, it will close.
5. If an obstruction is encountered while closing, the door will reverse.
6. If an obstruction is encountered while opening, the door will stop.
7. The optional Protector System™ uses an invisible beam which, when broken by an obstruction, causes a closing door to open and prevents an open door from closing. It is **STRONGLY RECOMMENDED** for homeowners with young children.

Allow a 15 minute cooling period after 5 continuous activations of the operator.

The operator light will turn on: 1. when operator is initially plugged in; 2. when the power is interrupted; 3. when the operator is activated.

The light turns off automatically after 4-1/2 minutes. Bulb size is 40 Watts maximum.

CARE OF YOUR OPERATOR

When properly installed, operator will provide high performance with a minimum of maintenance. The operator does not require additional lubrication.

Limit and Force Adjustments: These adjustments must be checked and properly set when operator is installed. Only a screwdriver is required. Weather conditions may cause some minor changes in the door operation, requiring some re-adjustments, particularly during the first year of operation.

Refer to the limit and force adjustments on pages 4 & 5. Follow the instructions carefully and repeat the safety reverse test after any adjustment.

Remote Control Transmitter: The portable remote control may be secured to a car sun visor with the clip provided. Additional remotes can be purchased at any time for use in all vehicles using garage. Refer to Accessories. Any new remotes must be set to the same code as the original remote.

Remote Control Battery: The 9 Volt battery should produce power for at least one year. When the light becomes dim or does not come on, replace the battery. If transmission range lessens, check the battery test light.

To Change Battery: Remove visor clip and connecting screw in transmitter case. Snap connector onto new battery. Do not dispose of the old battery with household waste. Take batteries to a proper disposal center.

MAINTENANCE OF YOUR OPERATOR

Once a Month:

- Repeat safety reverse test. Make any necessary adjustments.
- Manually operate door. If it is unbalanced or binding, call for professional garage door service.
- Check to be sure door opens and closes fully. Adjust Limits and/or Force if necessary.

Once a Year:

Oil door rollers, bearings and hinges.

The operator does not require additional lubrication.

Do not grease the door tracks.

HAVING A PROBLEM?

Operator doesn't activate from either door control or remote:

1. Have you disengaged all door locks?
2. Does the operator have electric power?
3. Repeated operation may have tripped the overload protector in the motor. Wait 15 minutes. Try again.
4. Is there a build-up of ice or snow under door? The door may be frozen to ground. Remove any obstruction.
5. Remove bell wire from operator terminals. Short terminals 1 & 2 by touching both terminals at same time with a piece of metal (screwdriver or coin). If operator runs, check for a faulty wire connection at lighted push button or a short under staples.

Operator activates from remote but not from door control:

1. Is door control button lit? If not, refer to No. 5 above.
2. Are wiring connections correct? Review page 3.

Door activates from door control but not from remote:

1. Check the battery test light. Replace battery if necessary.
2. If you have two or more remotes and only one activates, review receiver programming procedures on page 4.
3. Is the door control button flashing? The operator receiver must re-learn the remote control code. Follow the instructions on page 4.

Remote has short range:

1. Check battery test light. If the light is dim, change the battery.
2. Change the location of the remote control on the car.
3. A metal garage door, foil-backed insulation or metal siding will reduce the transmission range.
4. Make sure antenna is fully extended across ceiling.

Door reverses for no apparent reason:

1. Pull manual release handle. Operate door manually. If it is unbalanced or binding, call for garage door service.
2. Clear any ice or snow from garage floor area where garage door closes.
3. Review Force Adjustment.
Repeat safety reverse test after adjustment is complete.
4. If door reverses in FULLY CLOSED position, decrease travel limits.
Repeat safety reverse test after adjustment is complete.
The need for occasional adjustment of the force and limit settings is normal. Weather conditions in particular can affect door travel.
5. Check The Protector System™ (if you have installed this accessory). If the light is blinking, correct alignment.

The garage door opens and closes by itself:

1. Make sure remote push button is not stuck "on".
2. Remove bell wire from operator terminals and activate from remote only. If this solves the problem, the wall push button is faulty (replace), or there is a short or broken wire between push button and operator.

Door doesn't close completely:

1. Is something obstructing the door?
2. Review Travel Limits Adjustment.

Repeat safety reverse test after any adjustment of door arm length, close force or down limit.

Door won't close:

Check The Protector System™ (if you have installed this accessory). If the light is blinking, correct alignment.

Operator light does not turn ON:

Replace light bulb (40 Watts maximum). Use a "garage door operator bulb" if the standard bulb burns out prematurely due to vibration. Vibration may be caused by loose end panel. Retighten screws.

Operator light does not turn OFF:

There may be a defective ground at the ceiling or wall receptacle. The unit must be grounded.

Operator strains or maximum force is needed to activate door:

Door may be unbalanced or springs are broken. Close door and use manual release rope and handle to disconnect trolley. Open and close door manually. A properly balanced door will stay in any point of travel while being supported entirely by its springs. If it does not, call for garage door service to correct the problem.

Operator motor hums briefly, then won't work:

1. Garage door springs are broken. **SEE ABOVE.**
2. The trolley may be jammed into stop bolts. Pull or push on door while motor is humming to release jammed condition. Re-adjust door limits to prevent over-travel.
Repeat safety reverse test after adjustment is complete.
3. If problem occurs on the first activation of operator, door is locked. **Disable door lock.** If chain was removed and reinstalled, the motor may be out of phase. Remove chain; cycle motor to down position. Observe drive sprocket. When it turns in clockwise direction and stops in down position, re-install chain.

Operator won't activate due to power failure:

1. Pull manual release rope and handle down and back to disconnect trolley. Door can be opened and closed manually. When the power is restored, pull the manual release handle straight down. The next time the operator is activated, the trolley will reconnect.
2. The Outside Quick Release accessory disconnects the trolley from outside the garage in case of power failure.

Operator noise is disturbing in living quarters of home:

If operational noise is a problem because of proximity of the operator to the living quarters, Vibration Isolator Kit 41A3263 can be installed. This kit was designed to eliminate the "sounding board effect" and is easy to install.

ACCESSORIES - 26

- (1) Model 750E Single-Function Remote Control
- (2) Model 751E Single-Function Remote Control with code switches
- (3) Model 752E 2-Function Remote Control
- (4) Model 754E 4-Function Remote Control
- (5) Model 57LM Multi-Function Door Control Panel
- (6) Model 40E Keyless Entry System
- (7) Model 760E Outside Keylock
- (8) Model 1702E Outside Quick Release
- (9) Model 770E The Protector System™
- (10) Model 1703E The Chamberlain Arm™

SPECIFICATIONS

	Motor
Type	Permanent split capacitor
Speed	1500 rpm
Volts	230-240 Volts AC-50Hz Only
Current	2.0 amperes
	Drive Mechanism
Gears	16:1 worm gear reduction
Drive	Chain/cable with one-piece trolley on steel T-rail.
Length of Travel	Adjustable to 7-1/2 feet (2,29m)
Travel Rate	5"-7" (127-178mm) per second
Lamp	On when door starts, off 4-1/2 minutes after stop.
Door Linkage	Adjustable door arm. Pull cord trolley release.
	Safety
Personal	Push button and automatic reversal in down direction. Push button and automatic stop in up direction.
Electronic	Independent up and down force adjustment screws.
Electrical	Motor overload protector and low-voltage push button wiring.
Limit Device	Circuit actuated by limit nut.
Limit Adjustment	Screwdriver adjustment on side panel.
Start Circuit	Low voltage push button circuit.
	Dimensions
Length (Overall)	122-1/2" (3,11m)
Headroom Required	2" (51mm)
Hanging Weight	32 lb (14,5 kg)

GARAGE DOOR OPERATOR WARRANTY

Chamberlain warrants to the first retail purchaser of this product that the product shall be free from any defect in materials and/or workmanship for a period of 12 full months (1 year) from the date of purchase. Upon receipt of the product, the first retail purchaser is under obligation to check the product for any visible defects.

Conditions: This warranty shall constitute the sole remedy available under law to the purchaser for any damages related to or resulting from a defective part and/or product. The warranty is strictly limited to the repair or replacement of the parts of this product which are found to be defective.

The warranty does not cover non-defect damage caused by unreasonable use (including use not in complete accordance with Chamberlain's instructions for installation, operation and care; failure to provide reasonable necessary maintenance or any alterations to the products), labor charges for dismantling or reinstalling of a repaired or replaced unit or replacement batteries.

A product under warranty which is determined to be defective in materials and/or workmanship will be repaired or replaced (at Chamberlain's option) at no cost to the owner for the repair and/or replacement parts and/or product. Defective parts will be repaired or replaced with new or factory rebuilt parts at Chamberlain's option.

If, during the warranty period, the product appears as though it may be defective, contact your original place of purchase.

No representative or person is authorized to assume for Chamberlain any other liability in connection with the sale of this product.

114A1612B-EA/EGB ✓

114A 17 25

G300