

ELEMENT

eRSX

Reference Manual


1 - ABOUT THESE INSTRUCTIONS

About These Instructions

The following instructions include text sections, but also an illustrated section showing the main installation steps. The illustrated section can be found in the installation guide section of this document. These instructions are original instructions as described in the EC Directive 2006/42/EC. They contain important information regarding the product. Please read and follow the instructions attentively. Pay particular attention to all safety and warning notices.

Keep these instructions in a safe place for future reference!

Warnings used

The general warning symbol  indicates a danger that can lead to injury or death. In the text, the general warning symbol will be used with the caution levels described below.



WARNING

Indicates a potentially hazardous situation which, if not avoided, could result in death or serious injuries.

NOTICE

Indicates a potentially hazardous situation which, if not avoided, could result in damage or destruction of the product.

2 - SAFETY INSTRUCTIONS

Intended use

- This system has been designed for private and residential use only.

General safety instructions

- The field of application for this residential system is explained in EN 13241-1.
- When the system is installed, attention must be paid to potential hazards as defined in EN 12604 and EN 12453.
- The door installer must ensure that the installation complies with the respective national regulations.
- Installing, maintenance, repair and dismantling of the residential system may only be carried out by trained and qualified person.
- In case of failure (sluggish operation or other malfunctions), a qualified door installer must be appointed immediately for the inspection and repair of the door. The qualified door installer must ensure to respect national regulations.
- Before the door is put into service, it must be tested to make sure that it is easy to operate manually, mechanically sound, in perfect working order and also correctly balanced (EN 12604).
- This manual describes the assembly, use and maintenance of the residential system eRSX.
- After installation make sure that the CE marking label has been completed and attached.
- Installation users manual should be handed to the end user.
- This manual is subject to changes without written notice.

APPLICATION RANGE

This system has been designed for the following application:

- **Maximum day light width:** 5000 MM*
- **Maximum day light height:** 3000 MM
- **Maximum door weight:** 120 kg*
- **Minimum requested headroom:**
 - Manually operated: 100 mm minimum
 - Motor operated: 115 mm minimum
- **Minimum requested sideroom:**
 - Standard: 90 mm minimum
 - Reno: 70 mm minimum
 - Reno (Zero Sideroom): 0 mm

* When DLW > 3500 mm or door weight ≥ 100 kg, door must be motor operated

NOTICE

Damage due to improper fasteners

The fixing fasteners required to install the track set to the building are included in this set. It is the responsibility of the qualified door installer to make sure that the building structure (stone, concrete, steel, wood, etc.) is strong enough to ensure a reliable construction. Otherwise, this may result in damage when the door is operated. Select proper fasteners.

3 - INSTALLATION



WARNING

Danger of injury as the result of structural modifications

Modifying or removing functional parts may put important safety components out of action. Uncontrolled door movement could occur, and persons or objects may be trapped and injured as a result.

-Do not modify or remove any functional parts.

-Do not attach any additional parts. The extension springs are precisely matched to the door leaf weight.

Additional components may overload the springs.

-If equipping the door with a motor operator, pay attention to the instructions provided by the manufacturers of the door and a motor operator. Only use the original connections of the door manufacturer!

Before installing this system, the door opening and the building floor must be completely finished. Observe the following during installation:

- Make sure there is enough light.
- When performing installation or maintenance, always wear at least gloves (some parts can have sharp edges) and safety boots.
- When drilling or cutting, always wear safety goggles.
- Only use appropriate tools.
- Make sure you can always perform your work in a stable environment.
- Make sure there is a secure connection with the building structure, and that you have obtained prior approval from the structural engineer if you fasten the door system to supporting structural members.
- Ensure adequate water run-off in the area of the bottom seal and the frame parts, otherwise there is a danger of corrosion.

To ensure simple and secure installation, please follow the work steps listed in the illustrated section.



WARNING

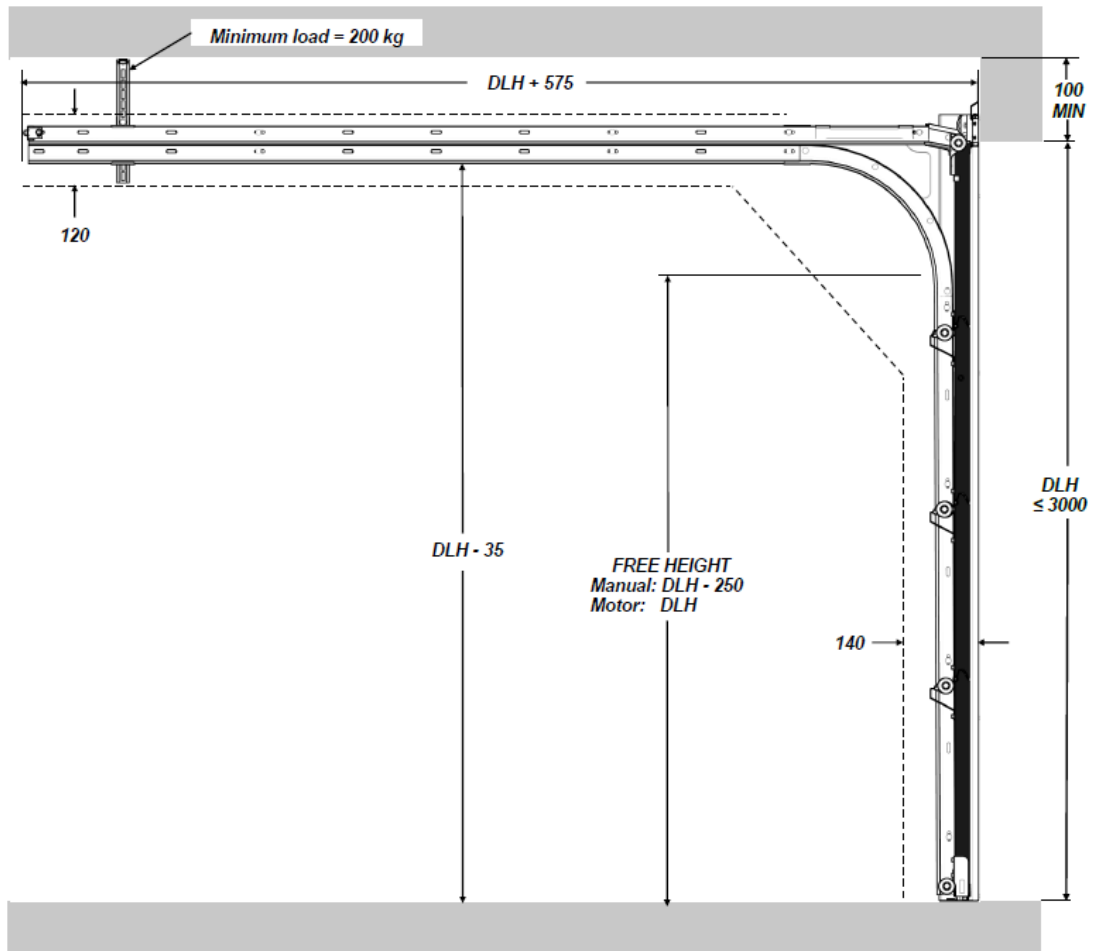
Danger due to high tension

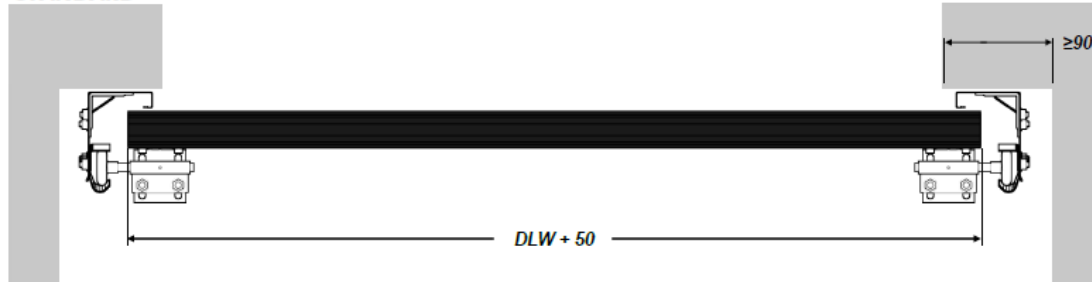
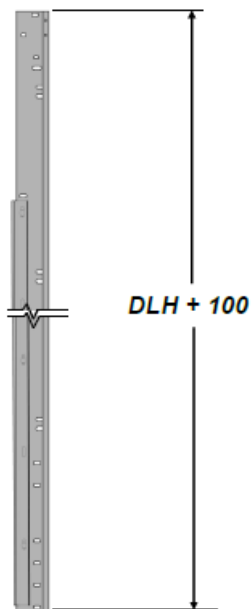
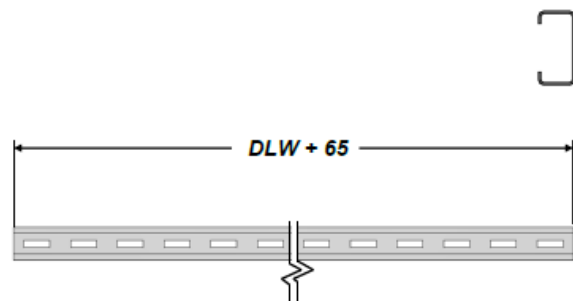
Springs are under high tension and may discharge high forces if they are not secured during tensioning. Fix the door leaf in a safe way in fully open position before tensioning the springs, to pre-vent uncontrolled movement.

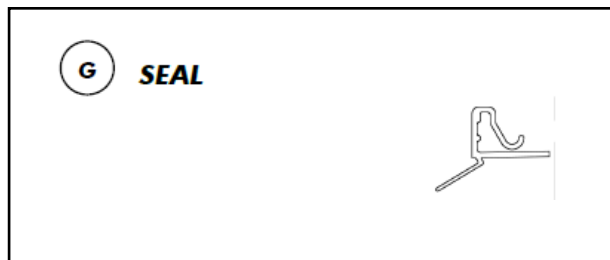
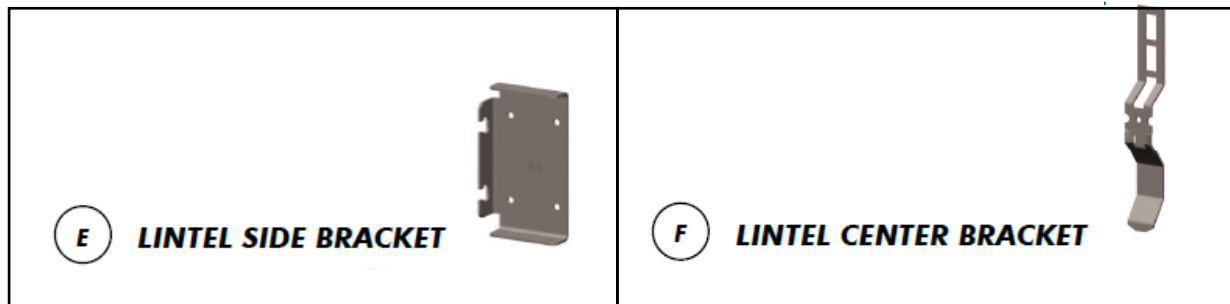
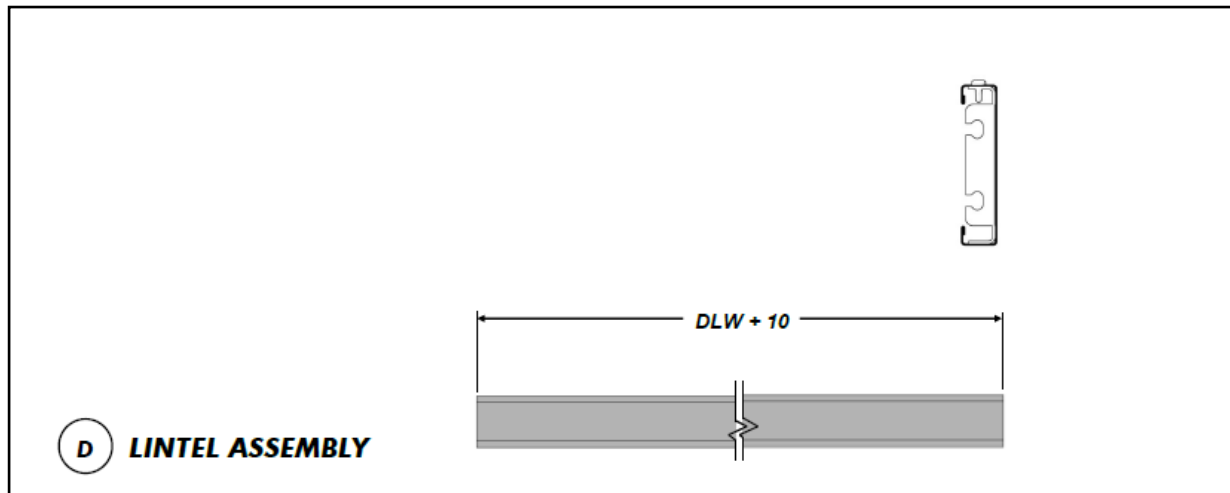
If the springs have been tensioned correctly, the moving door leaf will have a slight tendency to pull up-wards.

Take note that each time the door is serviced, the tension of the springs should be checked and, if necessary, subsequently re-adjusted.

Before putting the door into operation for the first time, review the MAINTENANCE INSTRUCTIONS section and inspect the door accordingly.

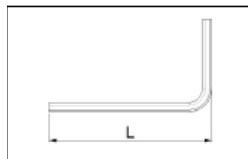
General dimensional requirements:

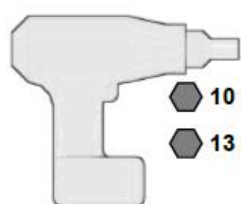
General dimensional requirements:**STANDARD****A VERTICAL TRACK SET (PAIR)****B C-PROFILE ASSEMBLY****C DISTANCE BEAM BRACKET**

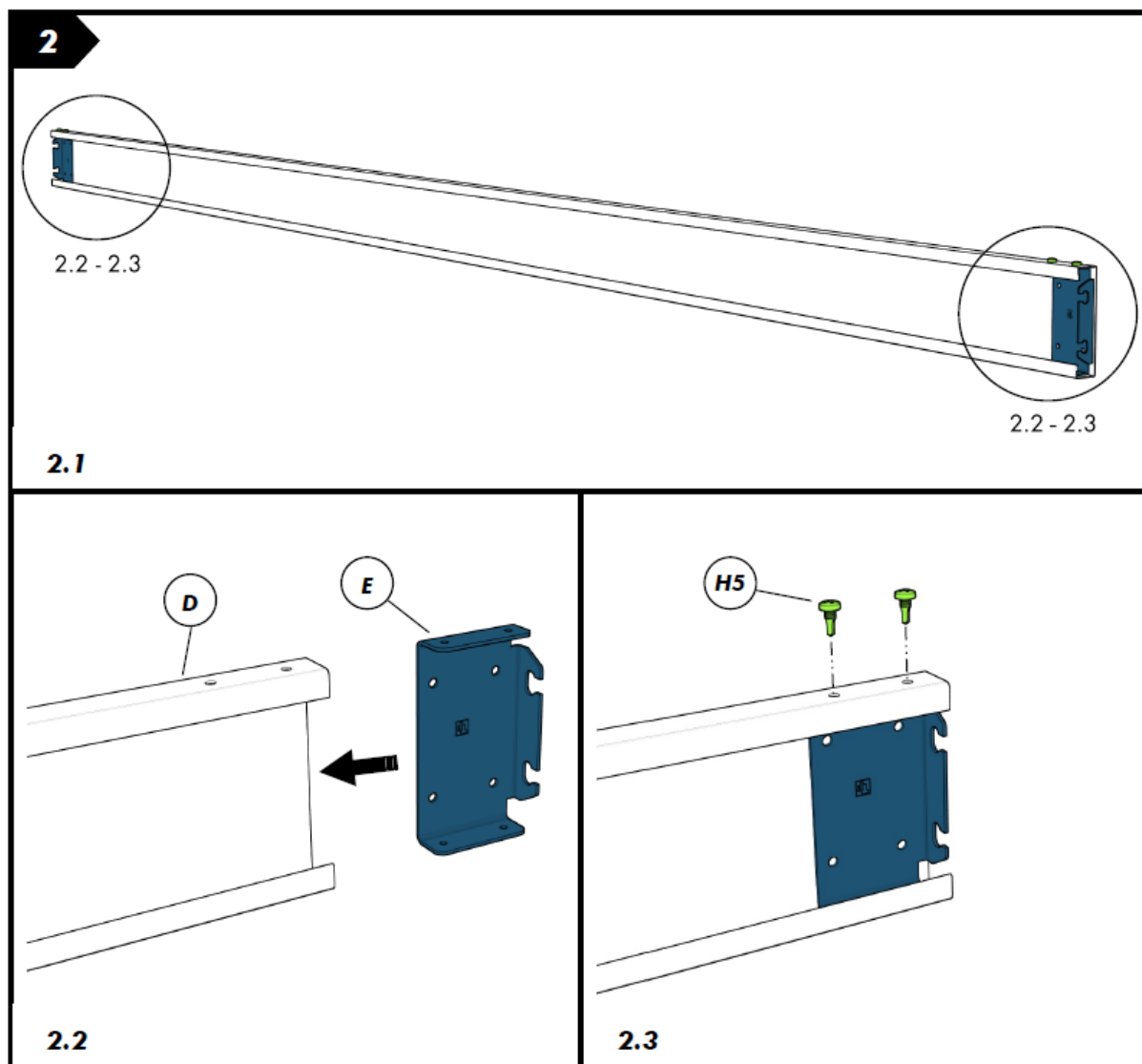
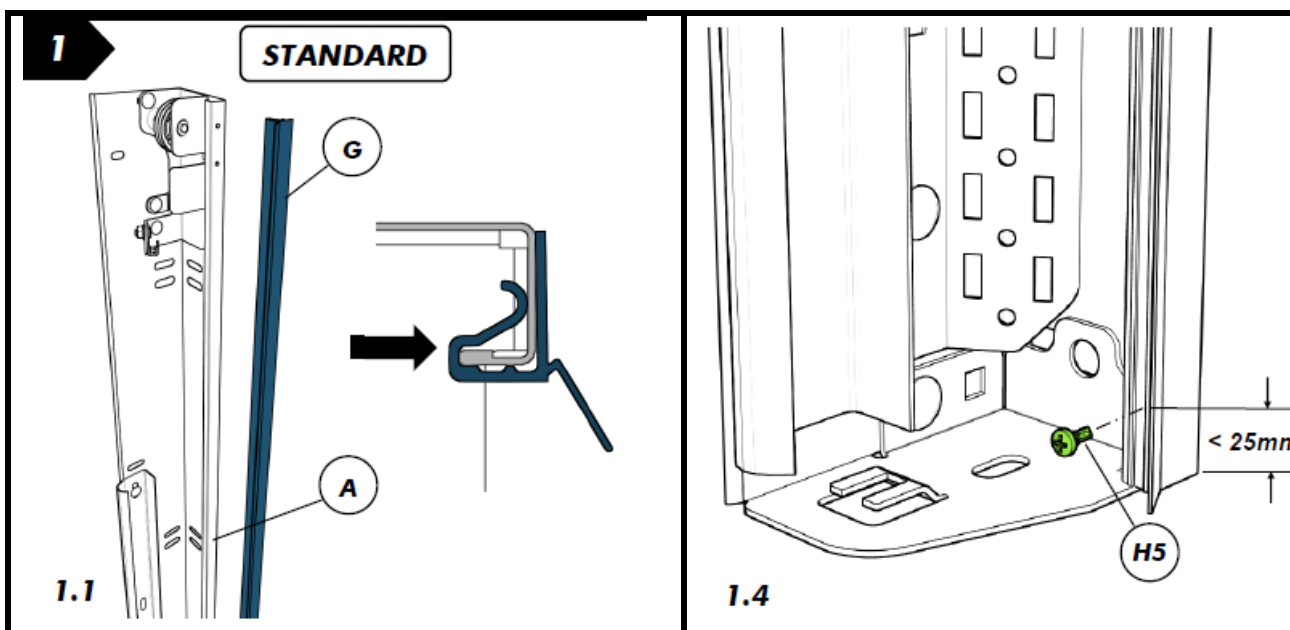


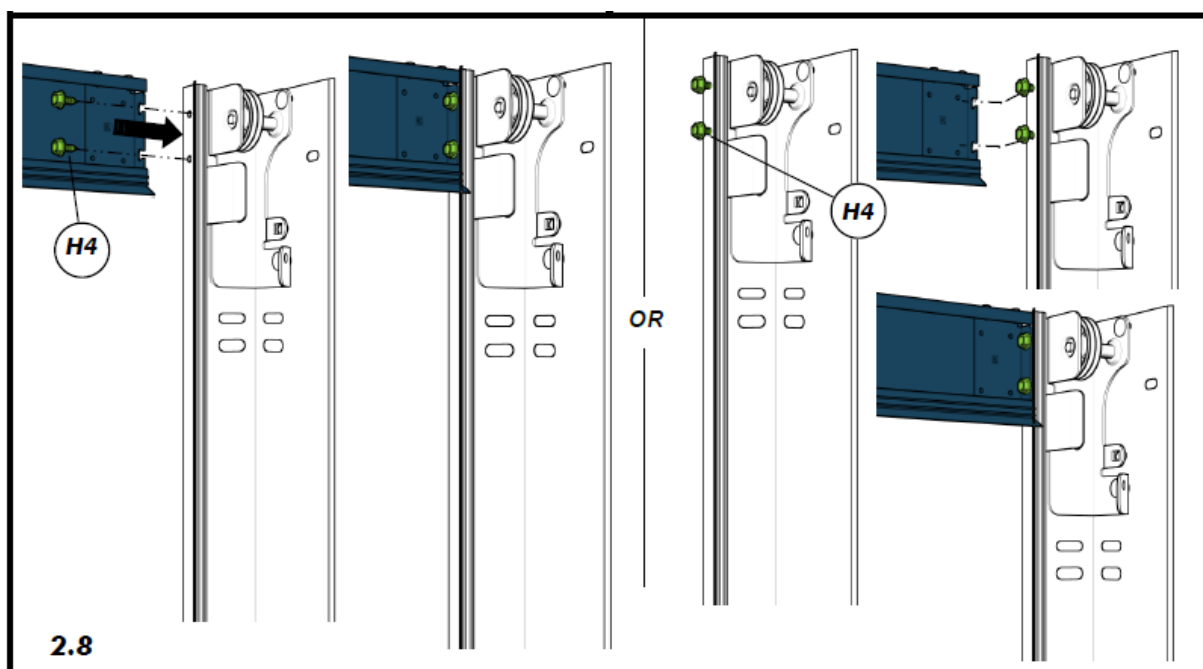
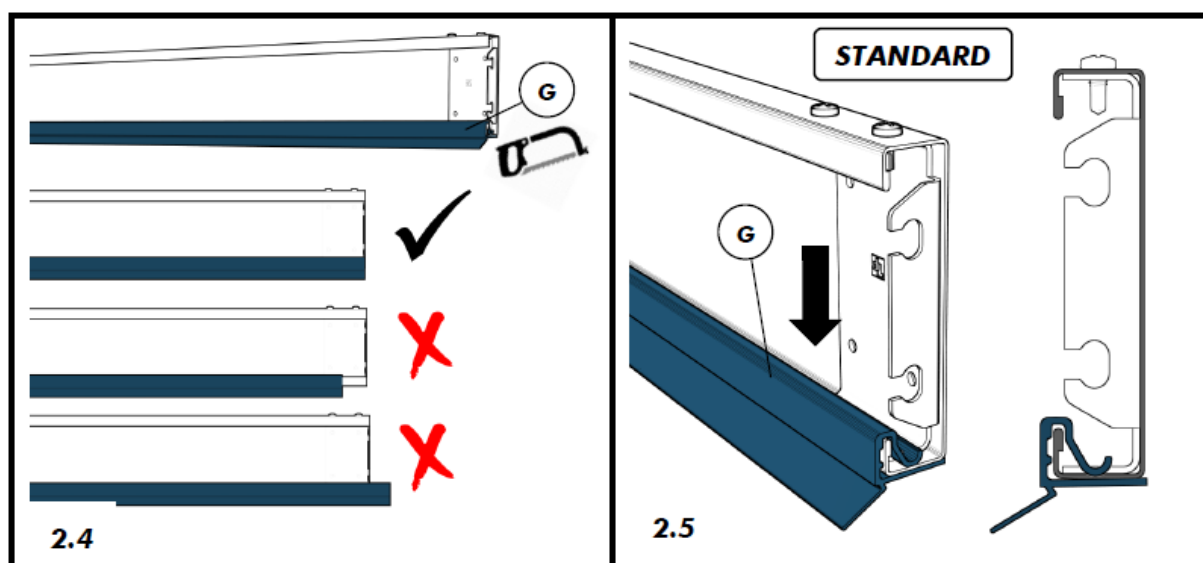
H FASTENERS

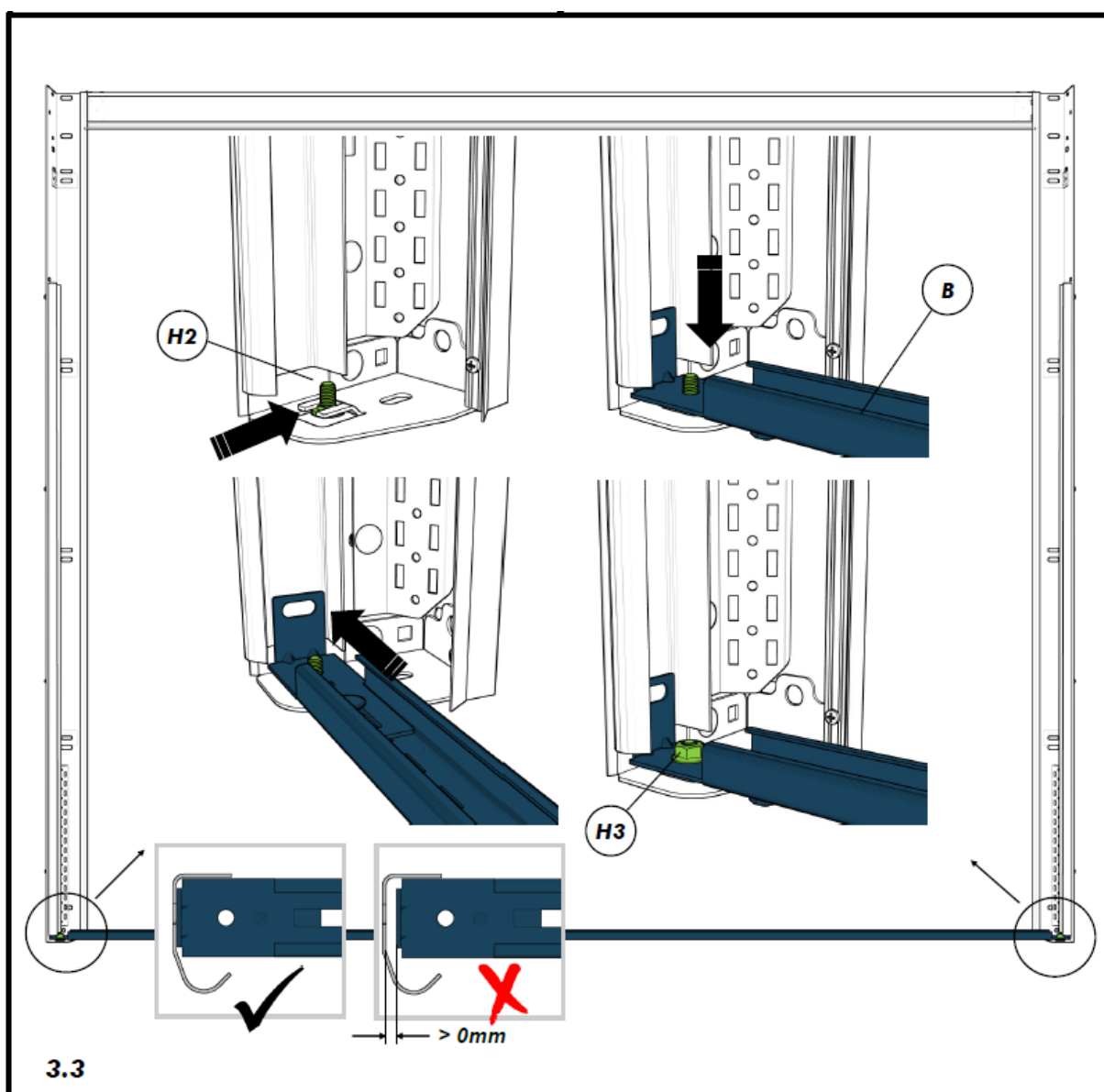
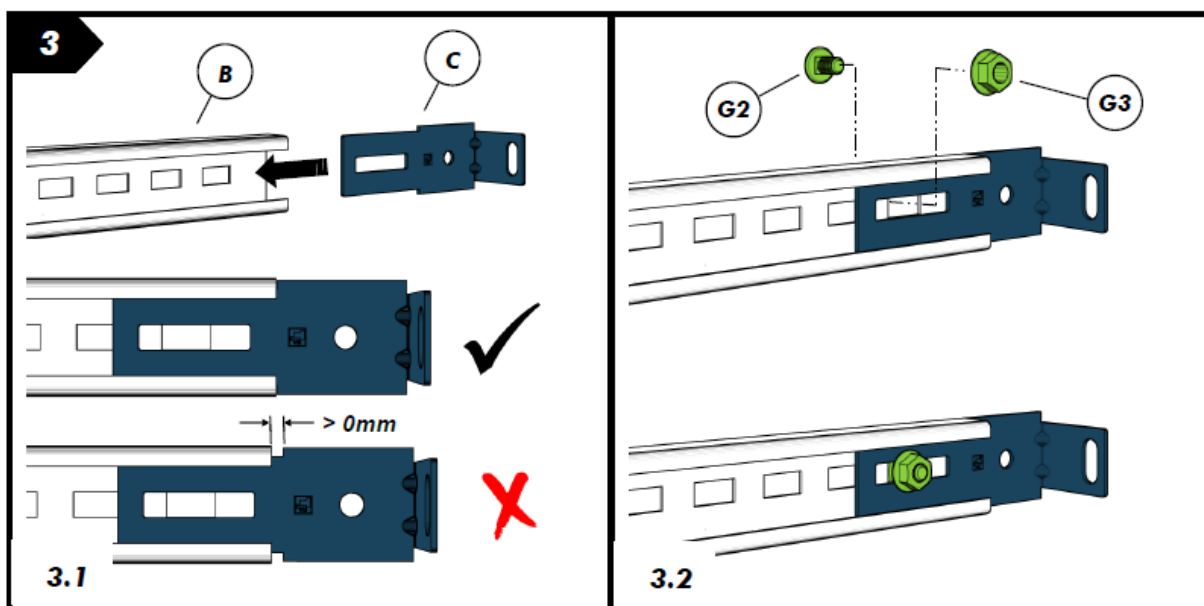
Part Number	D =	L =	
H2			
203884	8-1.25	15	
H3			
145994	8-1.25	-	
H4			
190019	6.3	16	
189858	6.3	35	
H5			
213015	4	12	
H6			
186118	11	10	
186121	11	5	

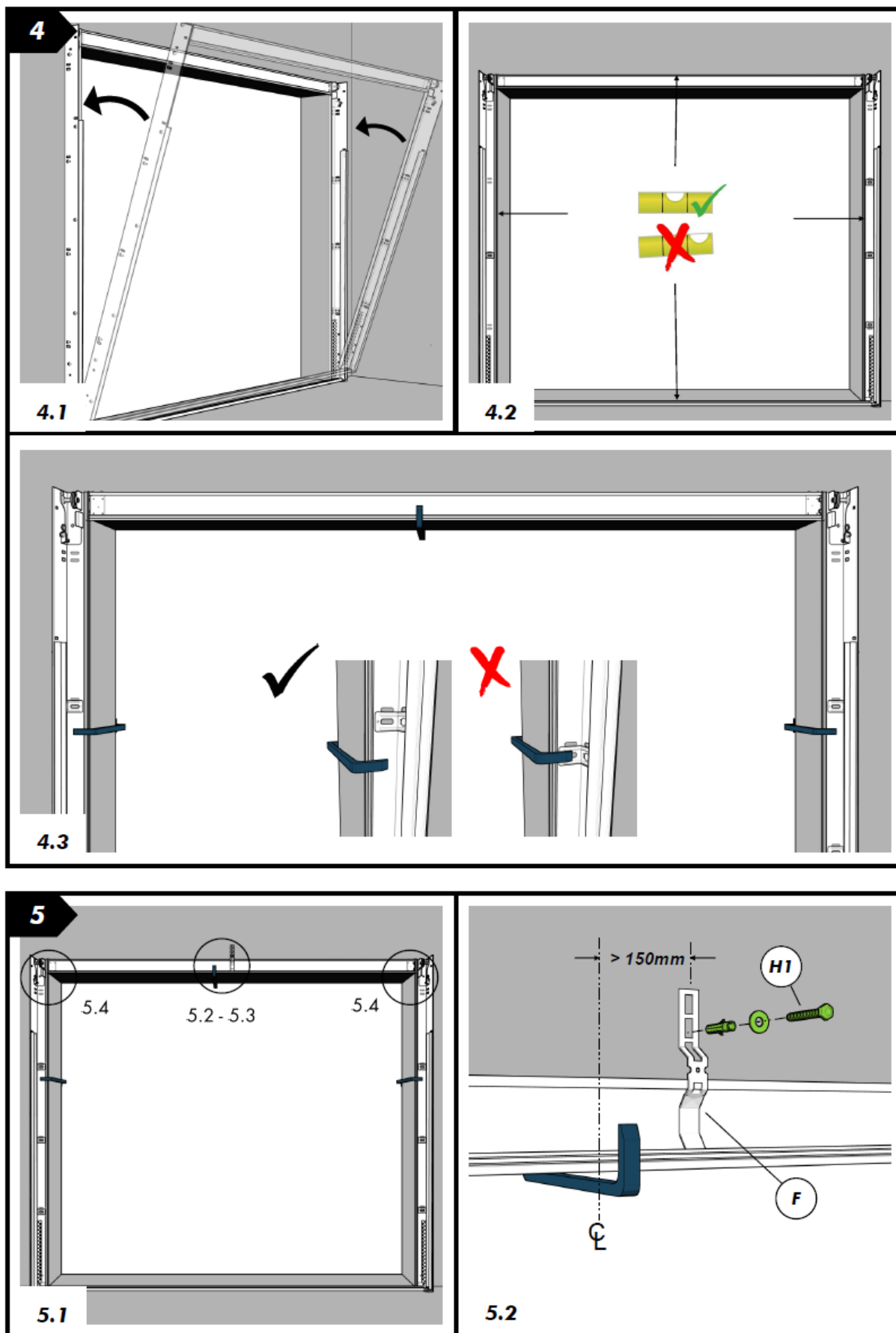
(K) SHORT HORN**(L) CURVE****(M) HORIZONTAL TRACK SET (PAIR)****(N) CURVE COVER (PAIR)****(O) TRACK HANGER****(P) ROOF HANGER****(Q) BOTTOM BRACKET (PAIR)****(U) MOVING PULLEY COVER****(V) FIX PULLEY COVER****(S) ROLLERS****(T) TOP ROLLER (PAIR)****(R) HINGES****(W) LIFT CABLE****(X) TENSION SPRING SET**

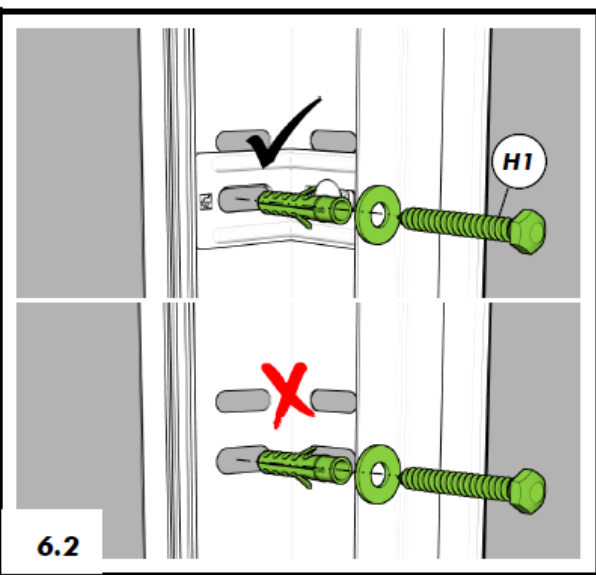
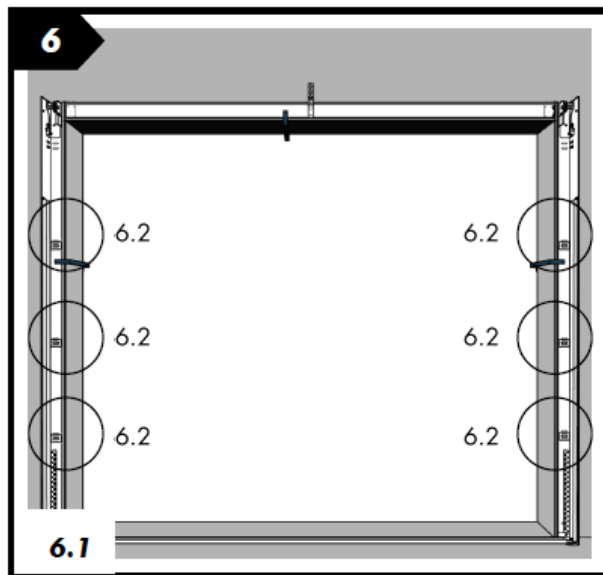
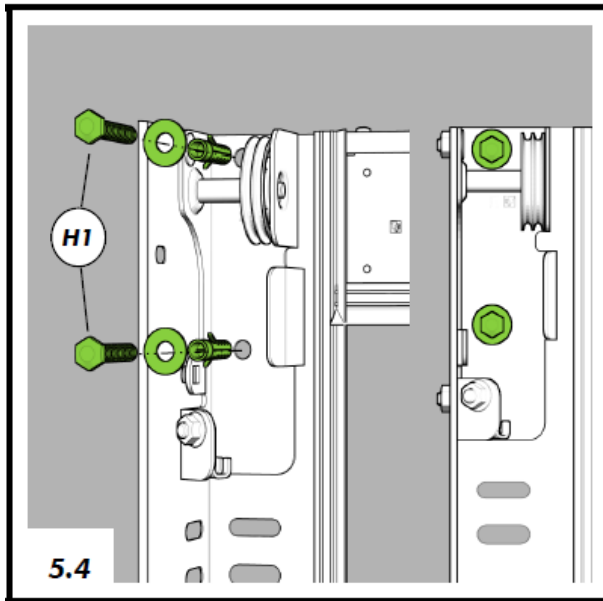
**NOT INCLUDED****13mm****10 mm****13 mm****3X****2X****INCLUDED****H2****H3****H4****H5**

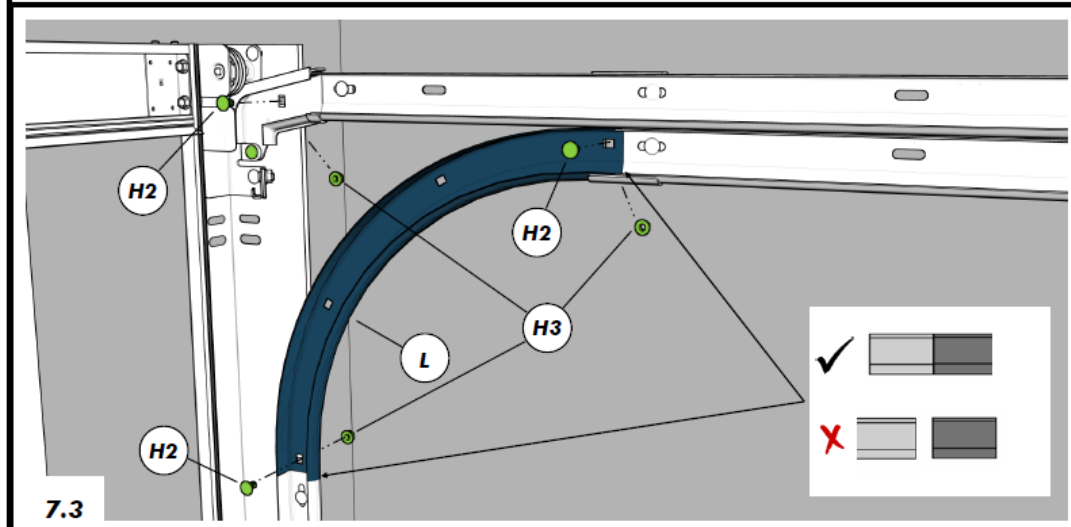
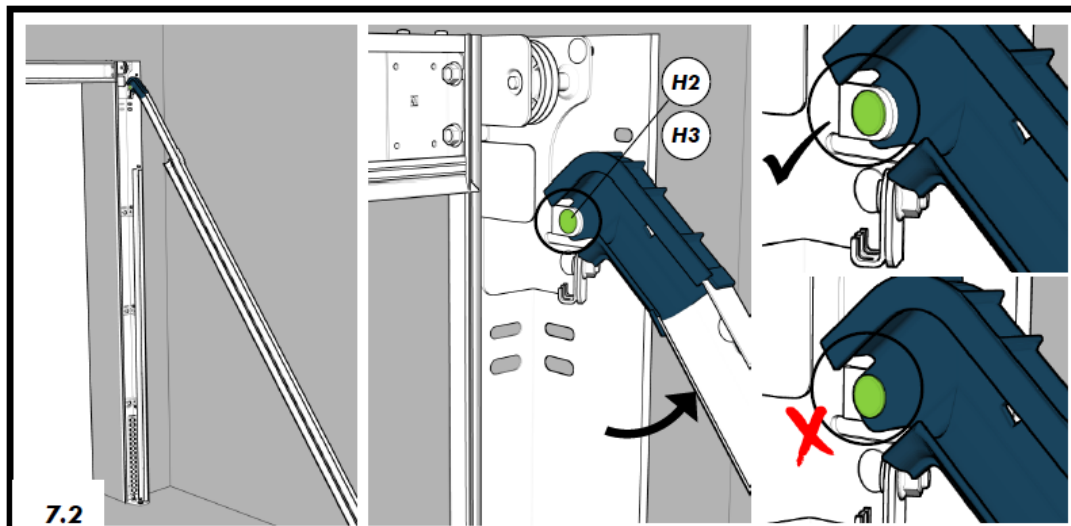
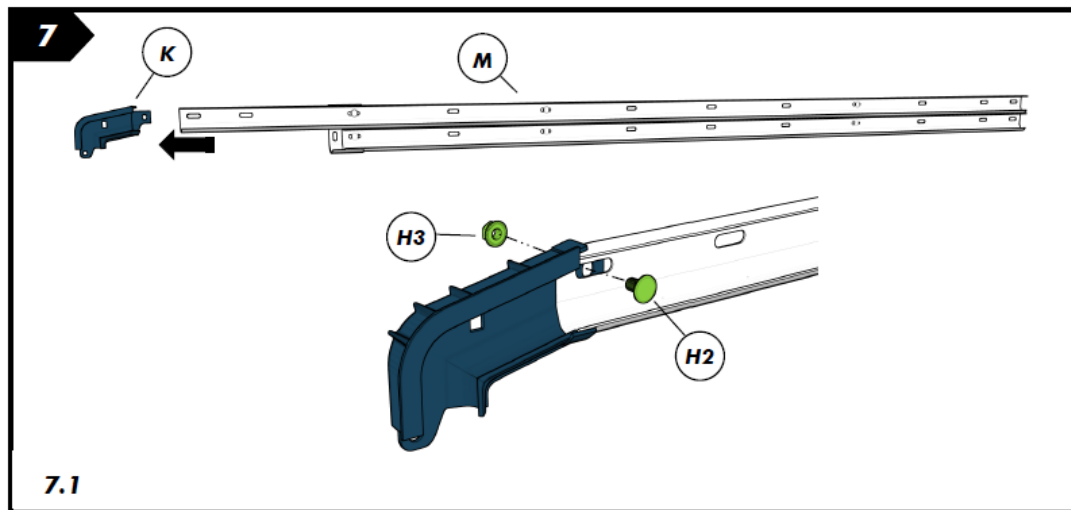


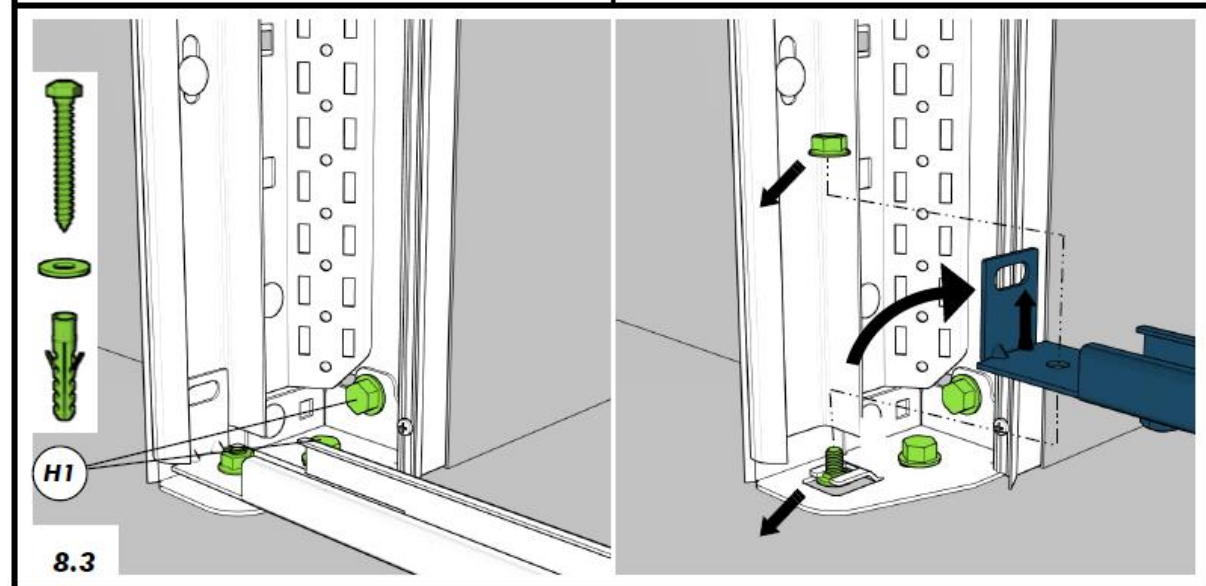
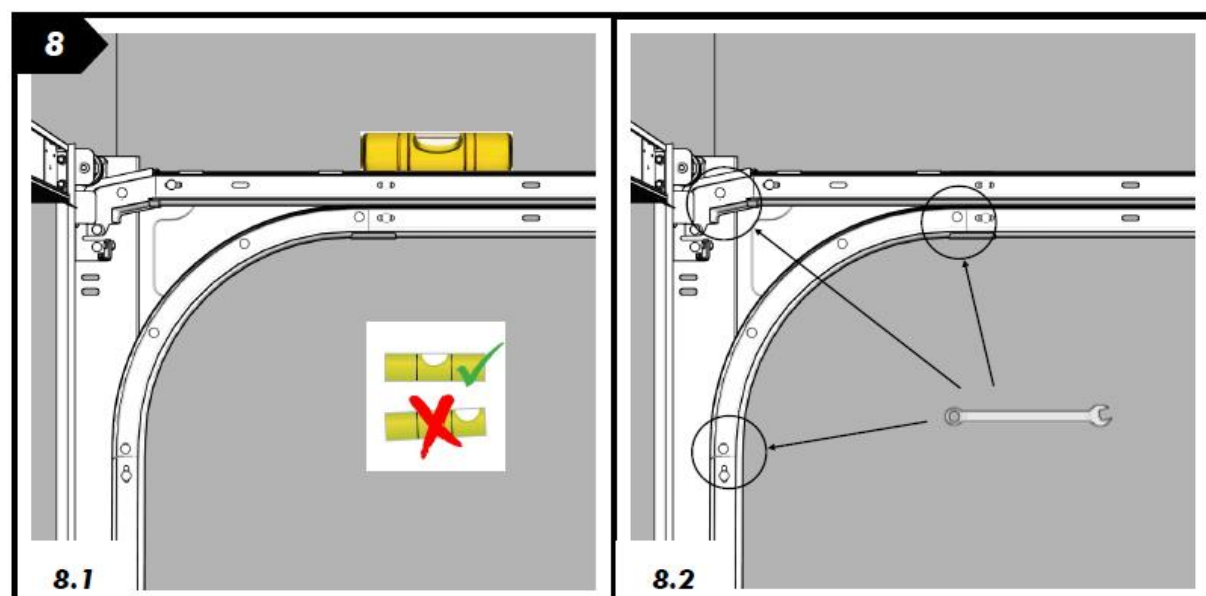
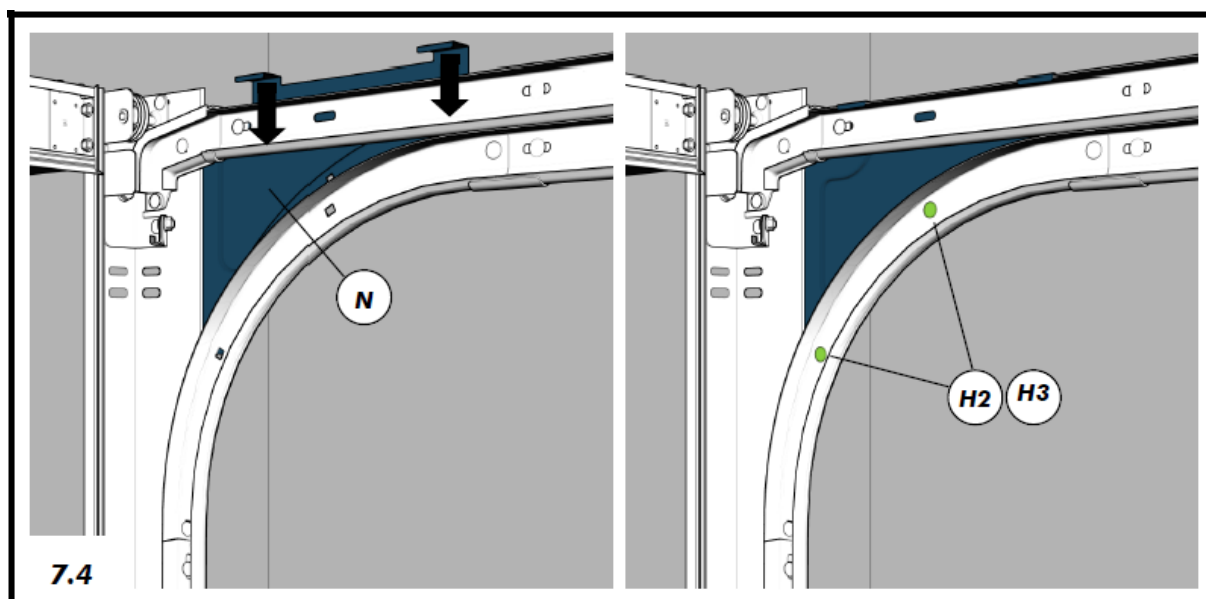


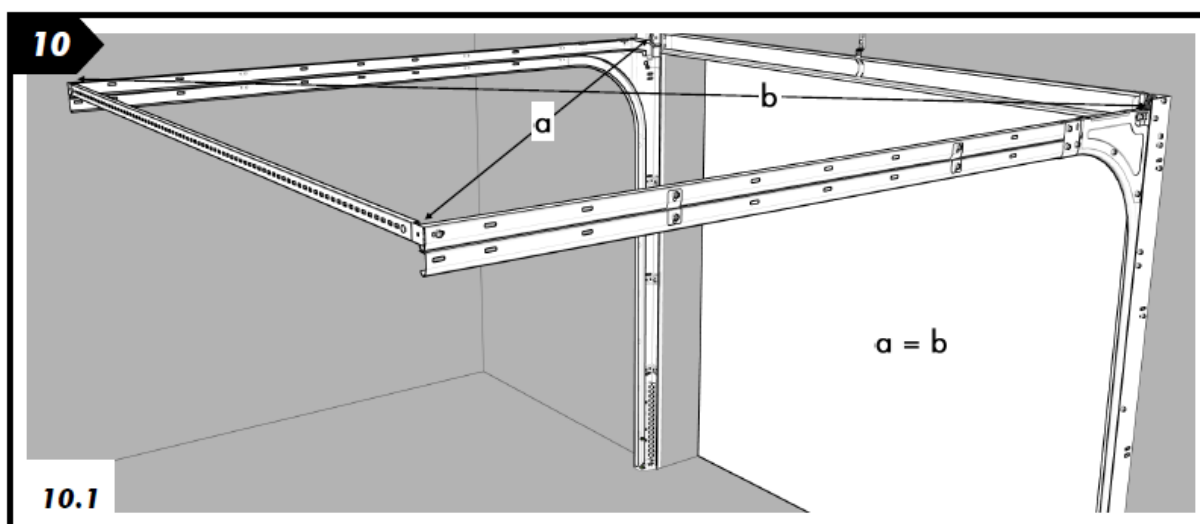
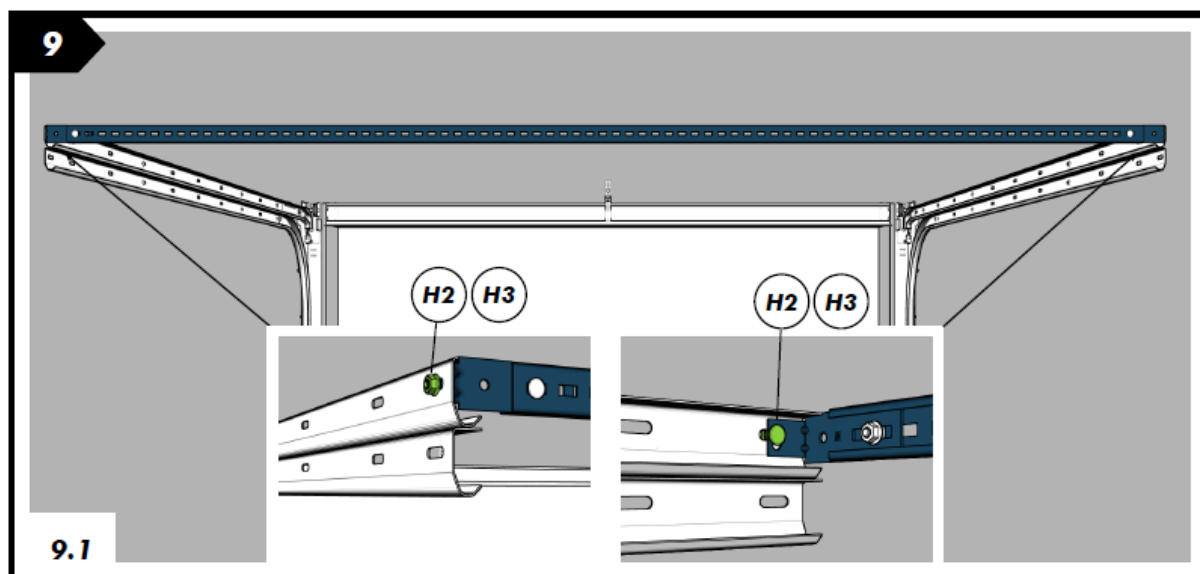


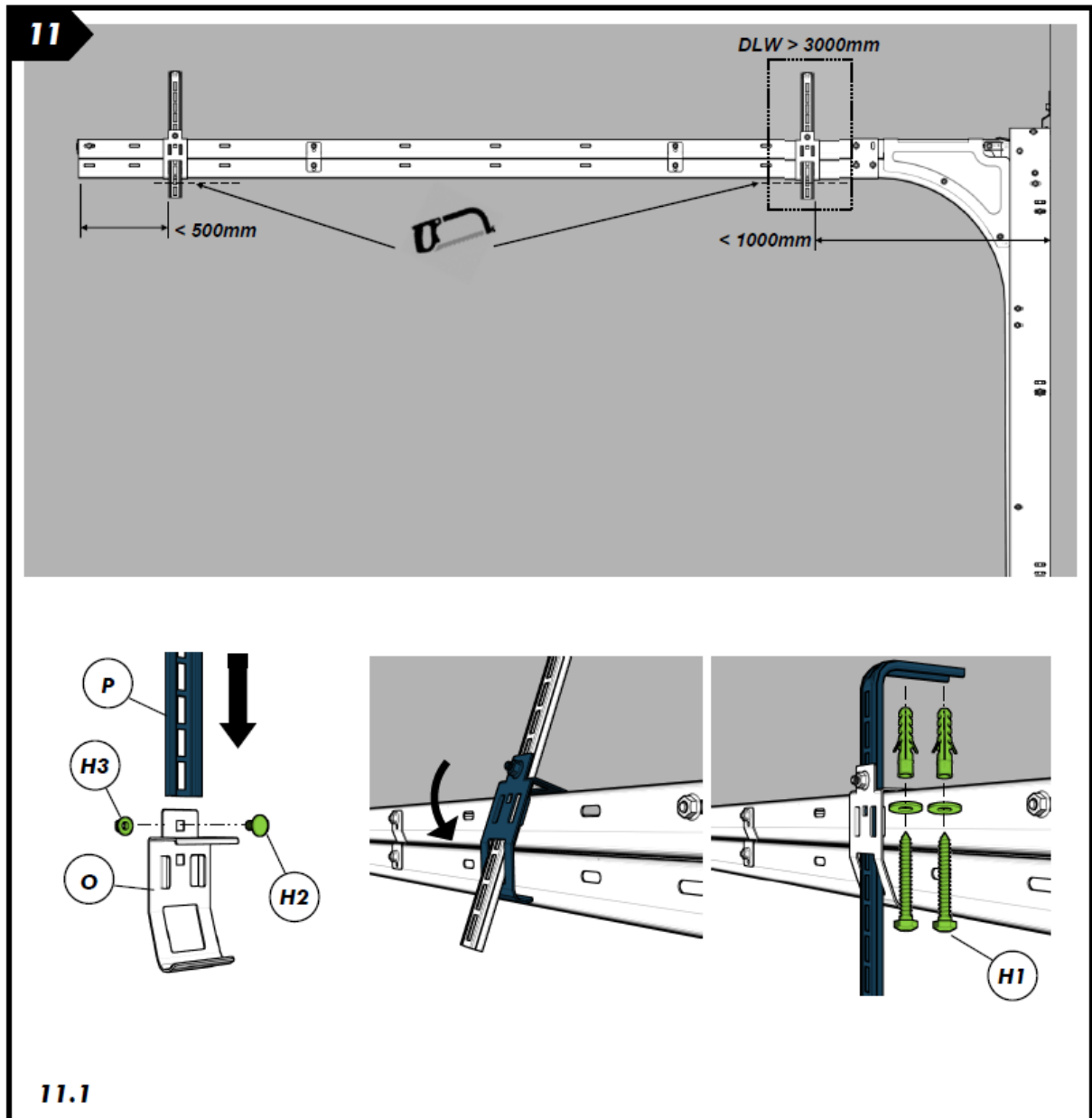


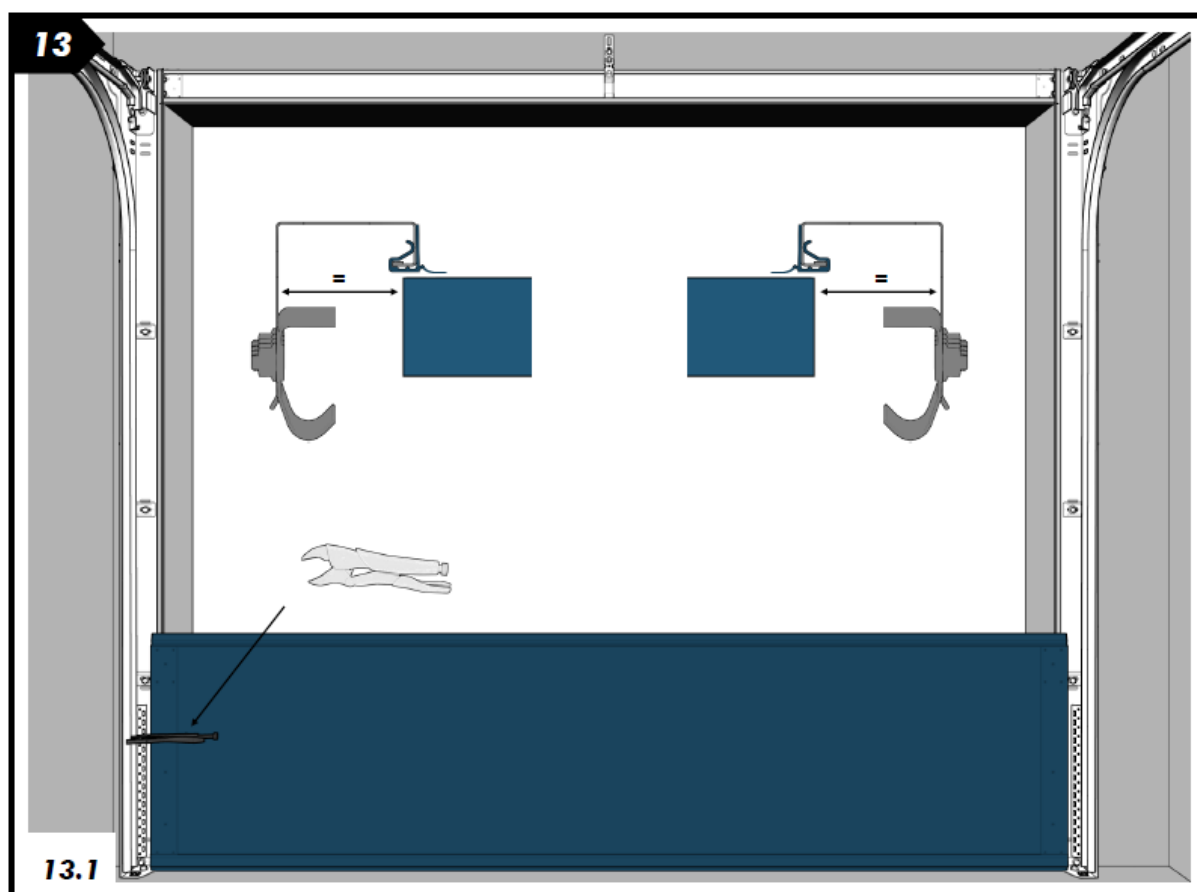


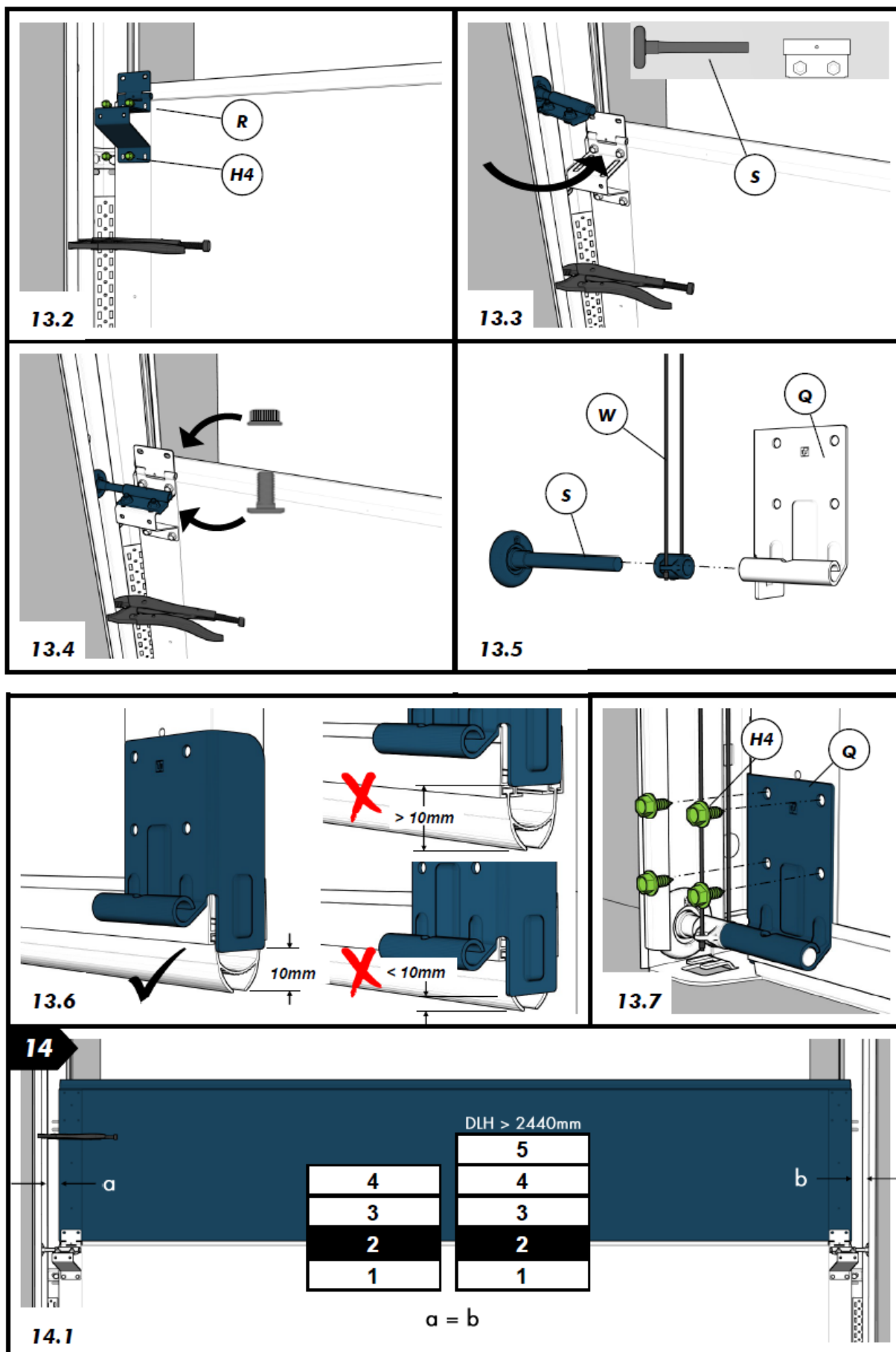


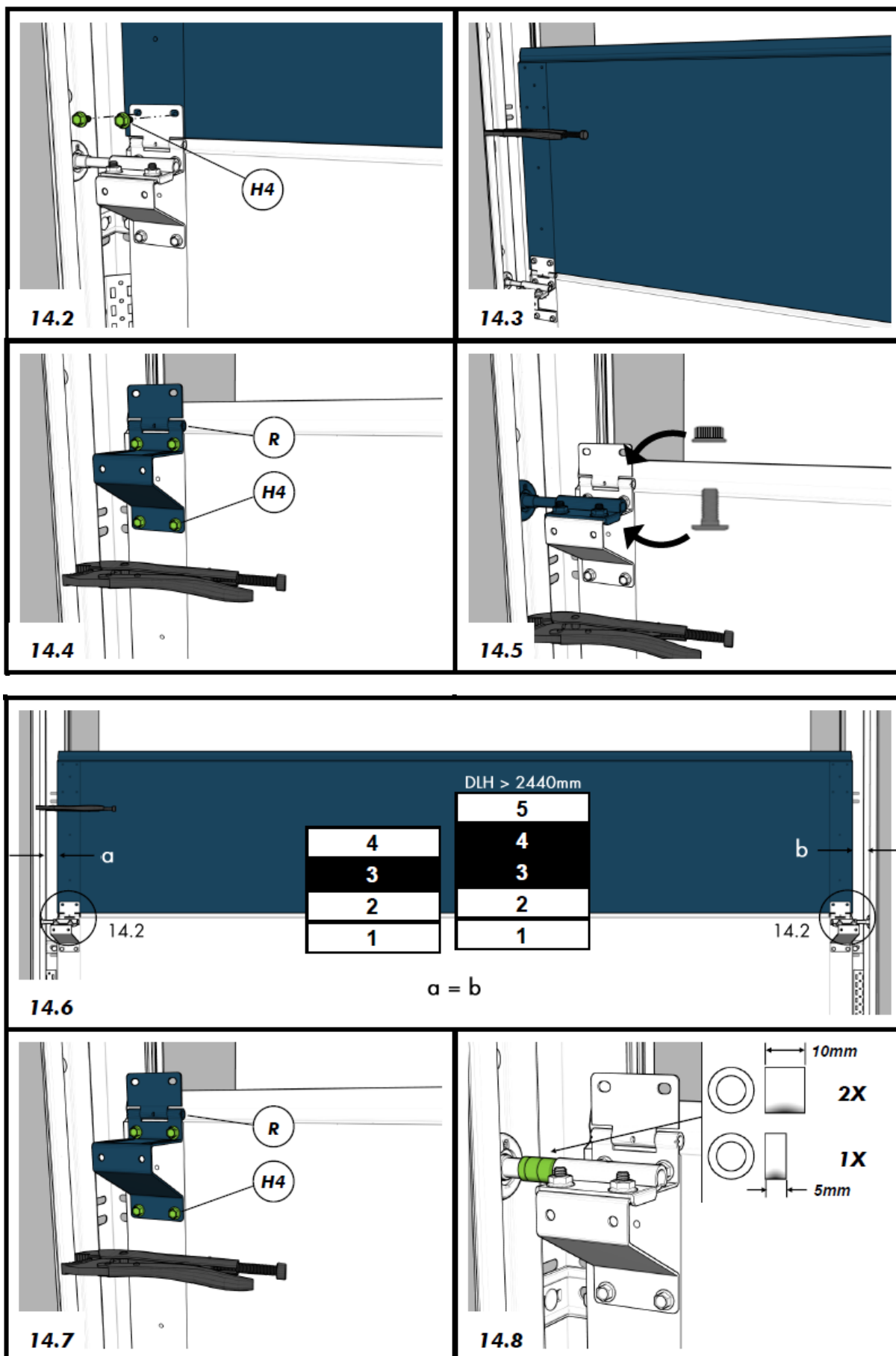


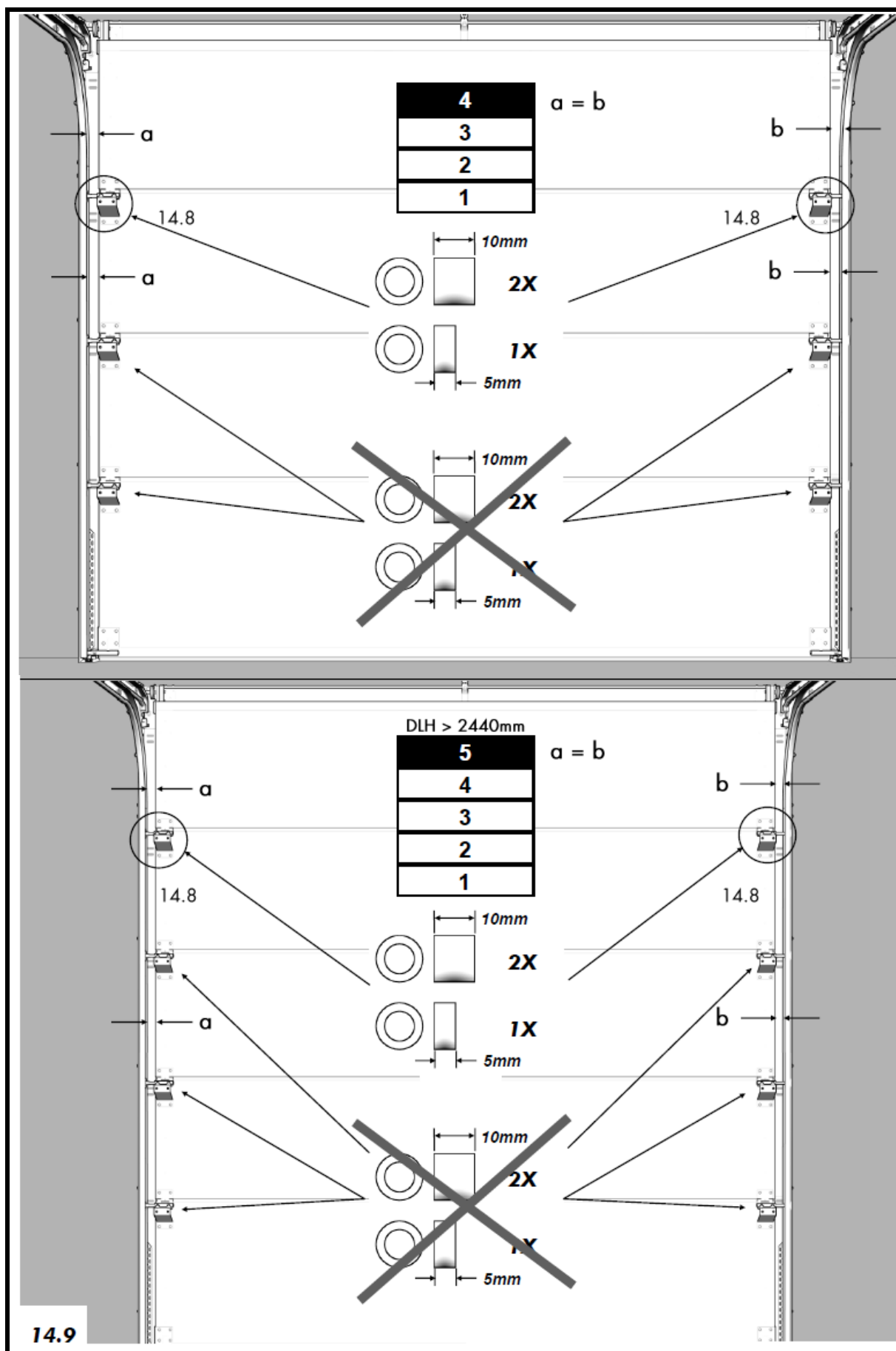


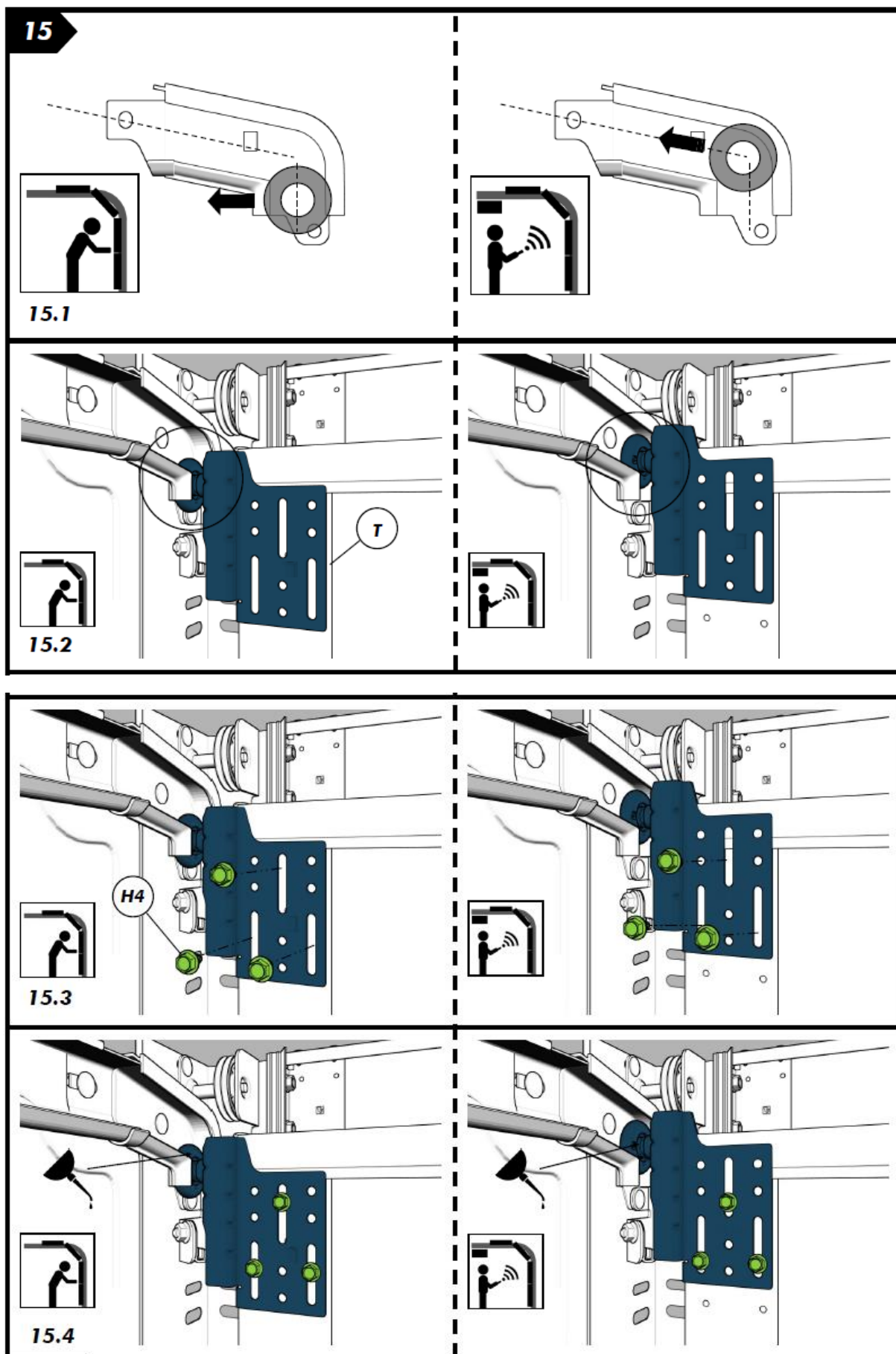


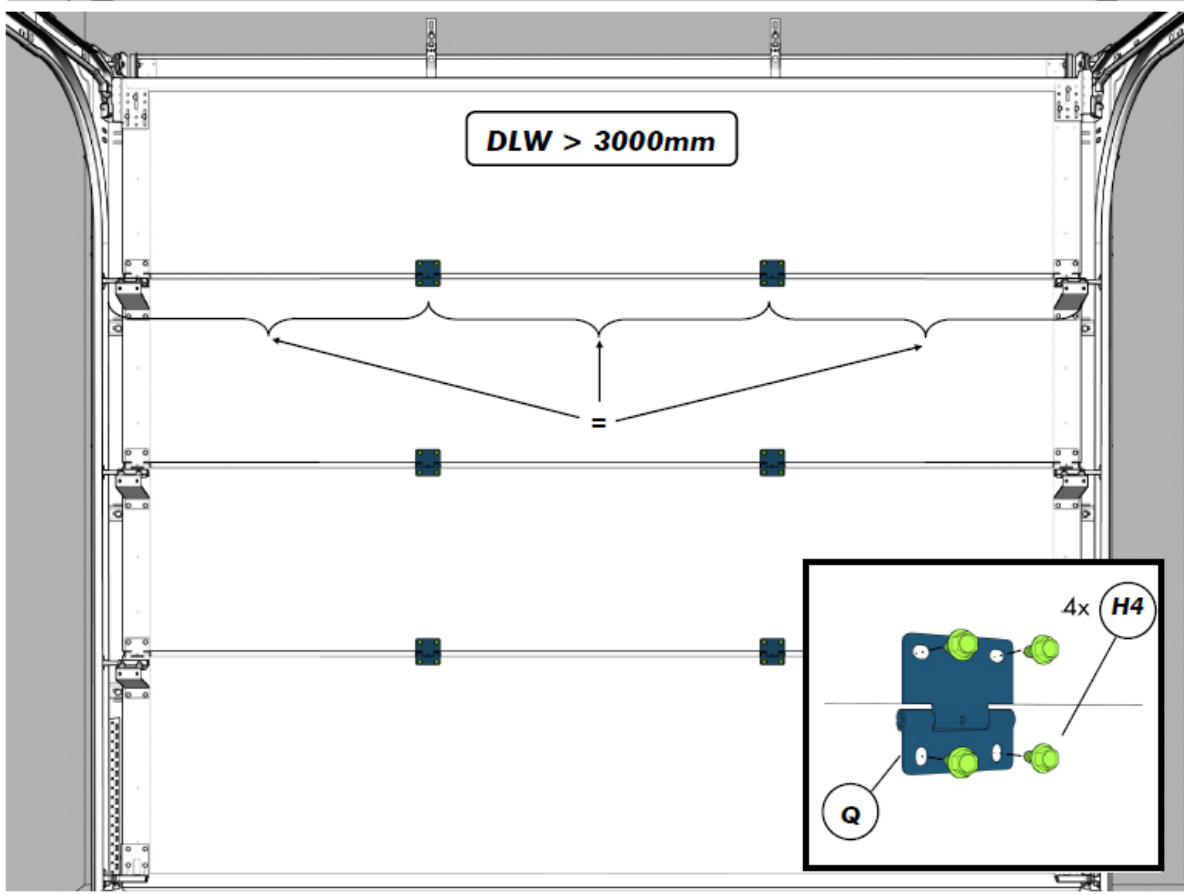
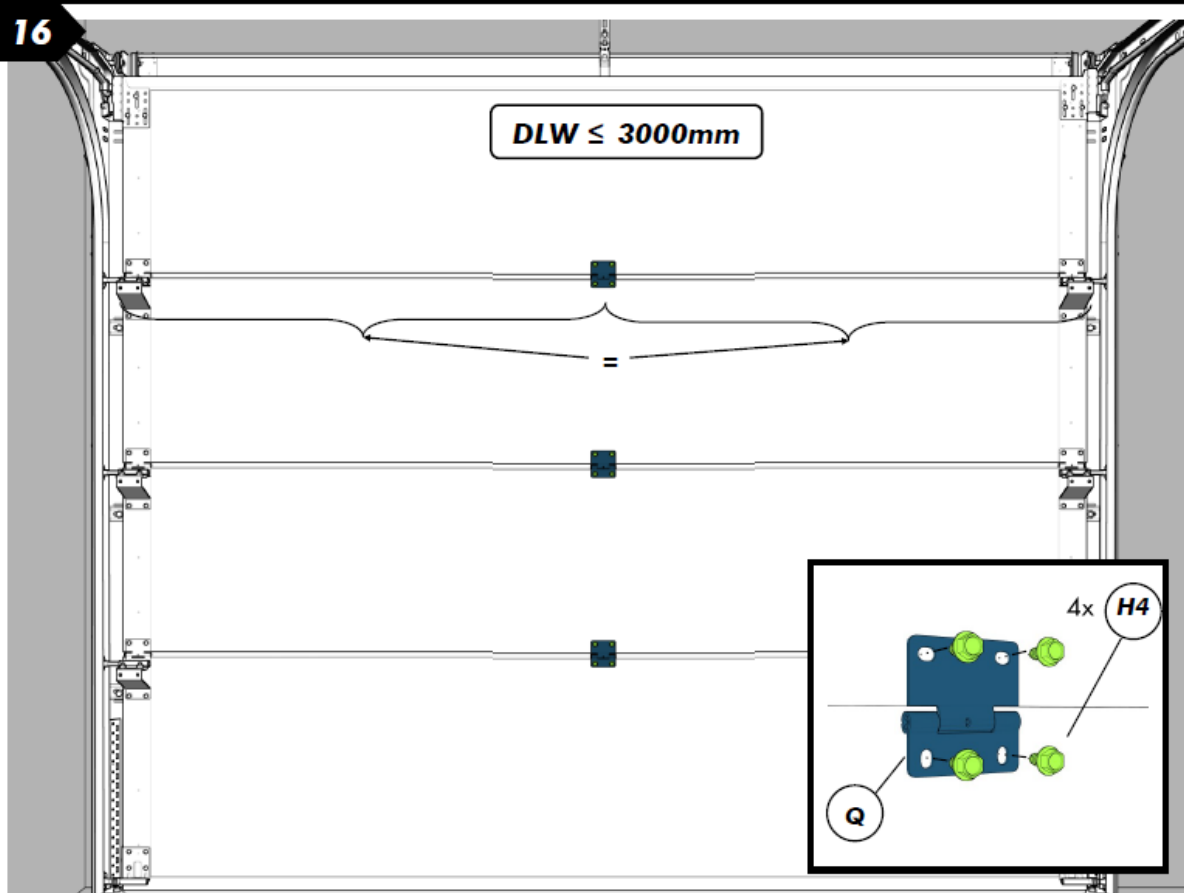


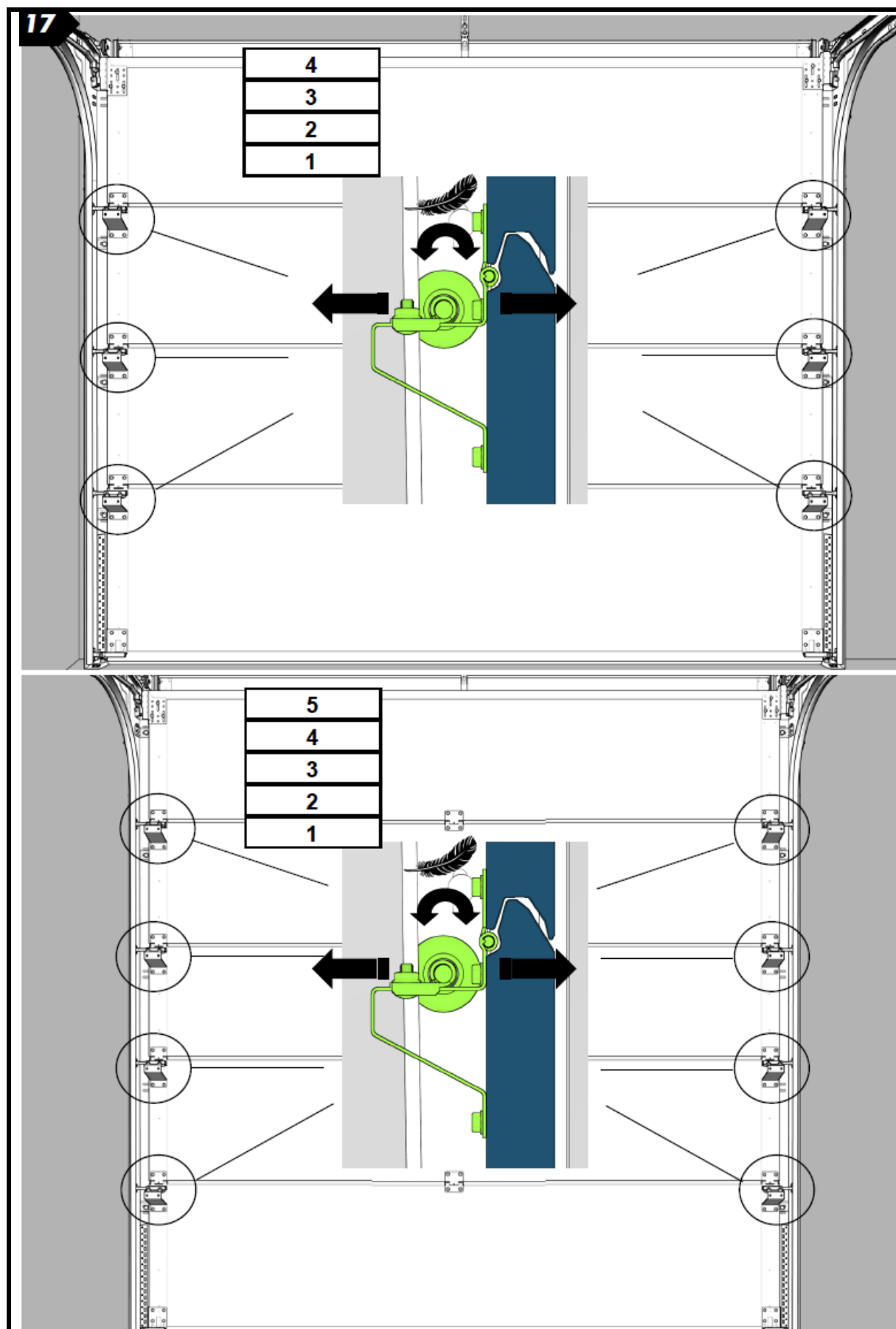


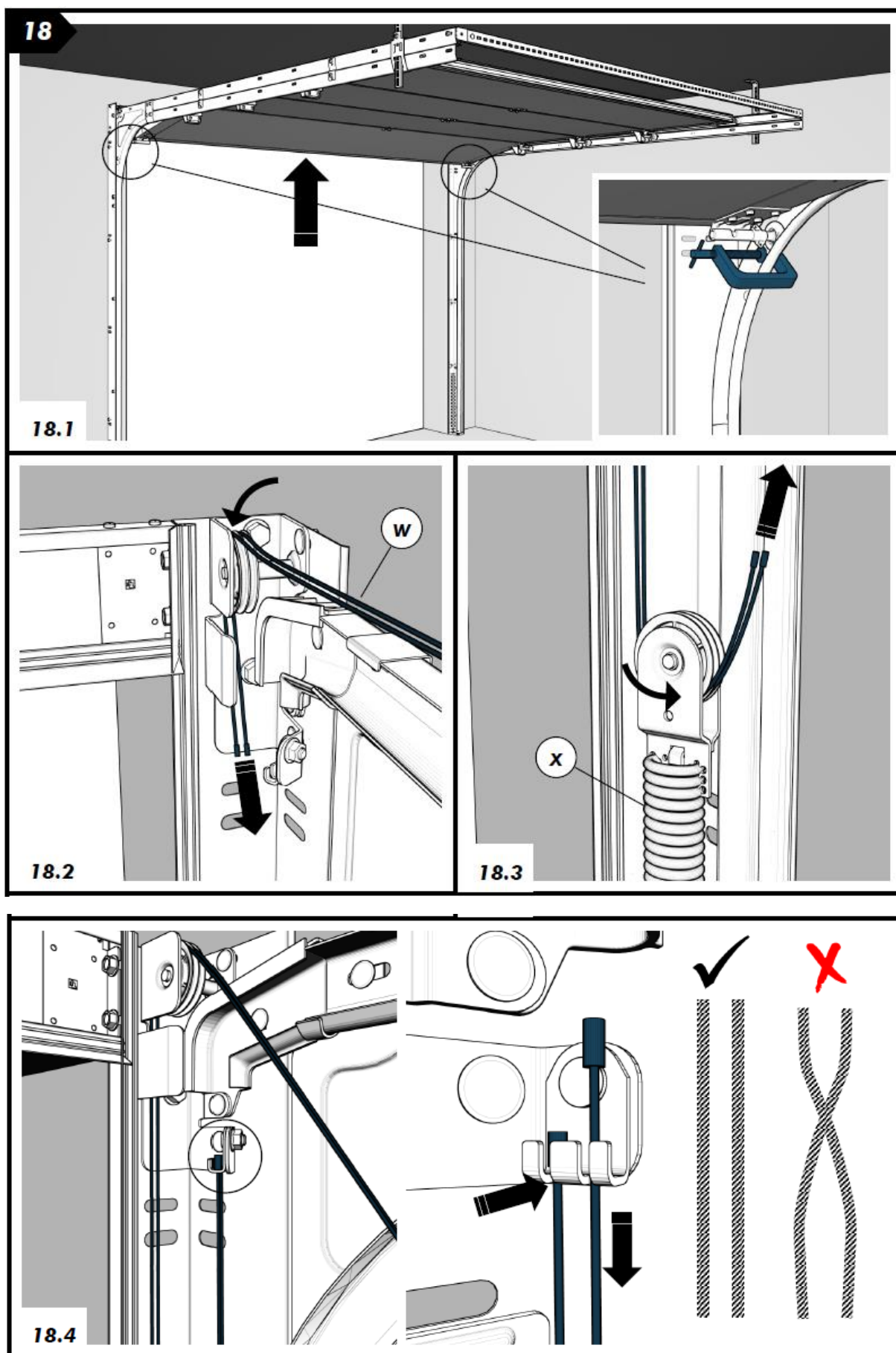


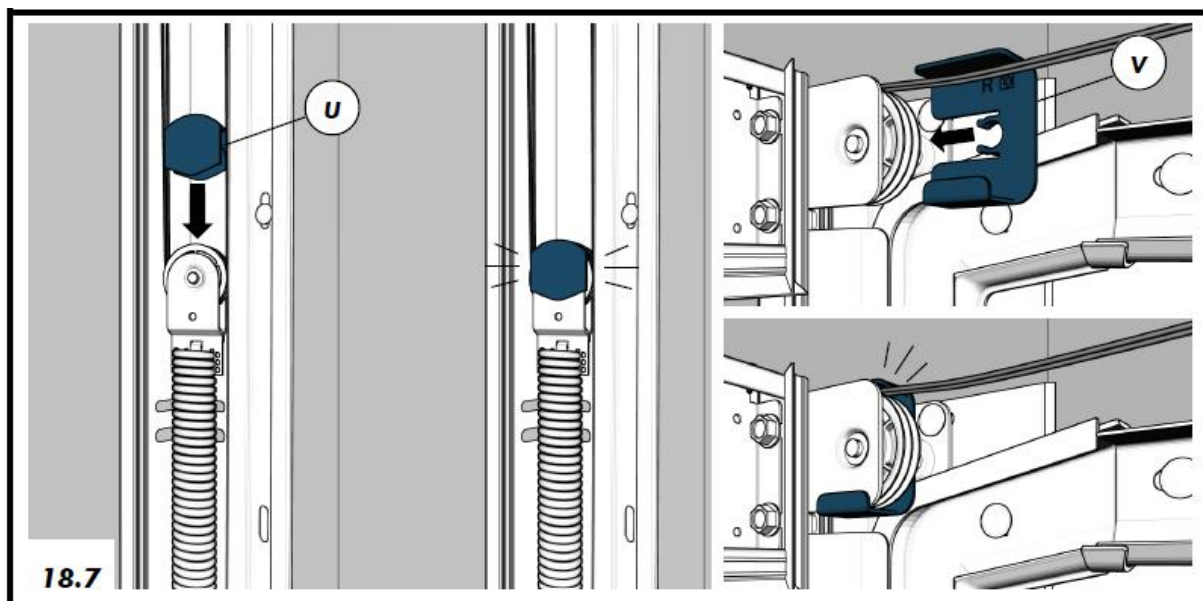
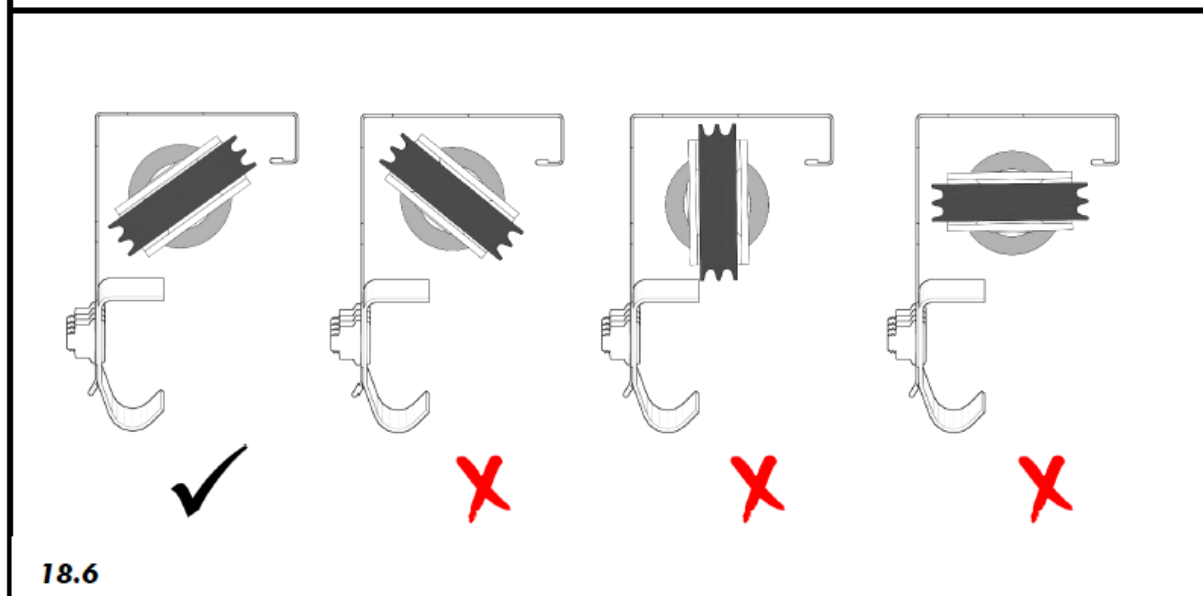
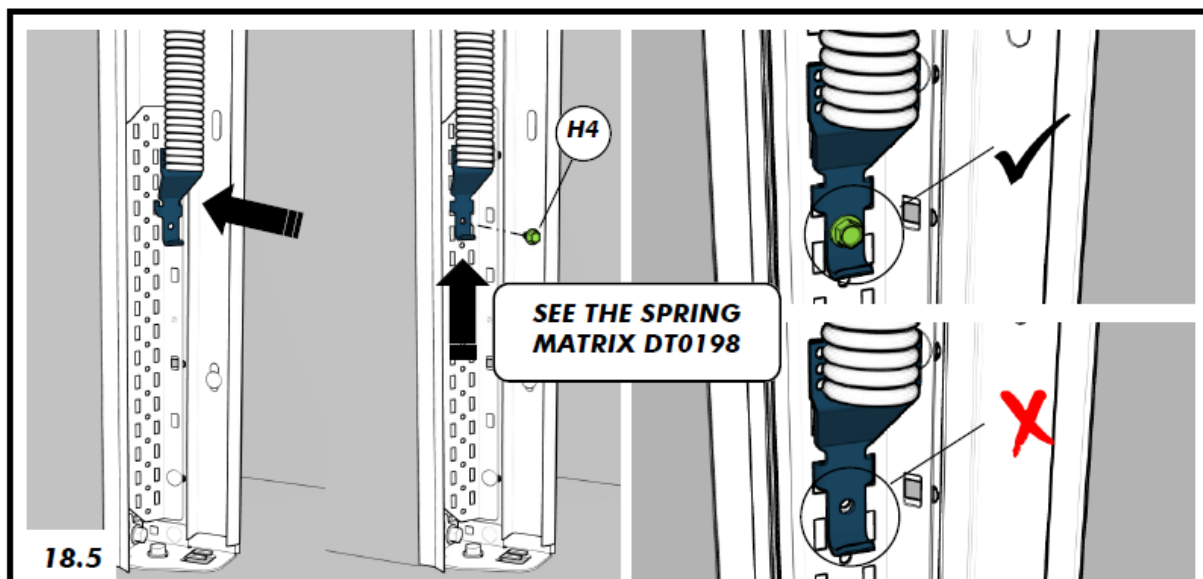


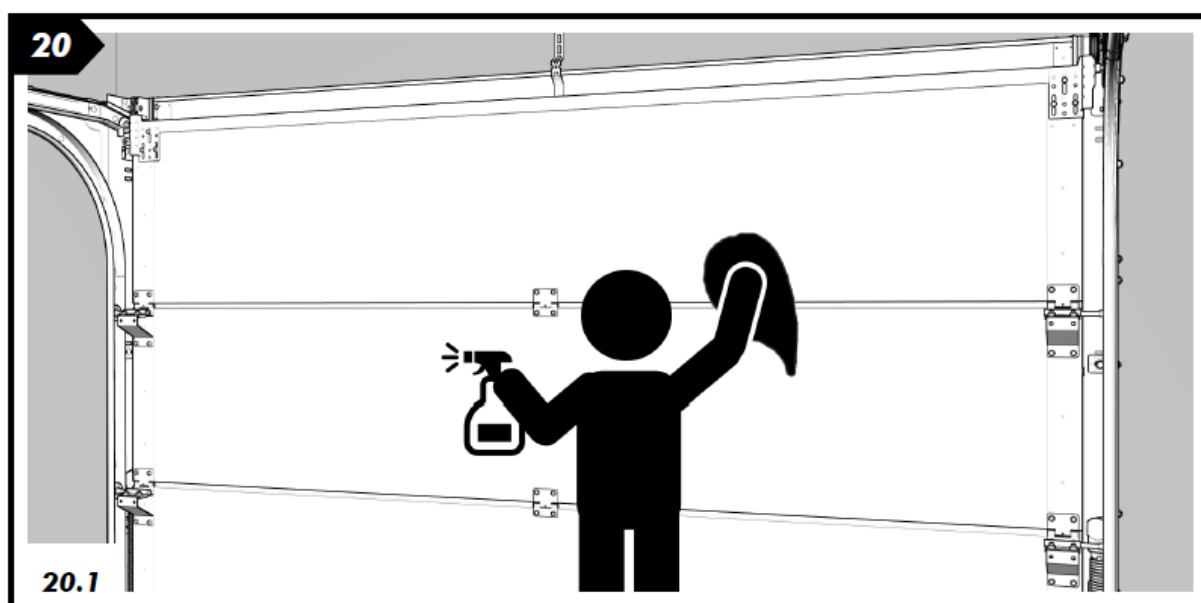
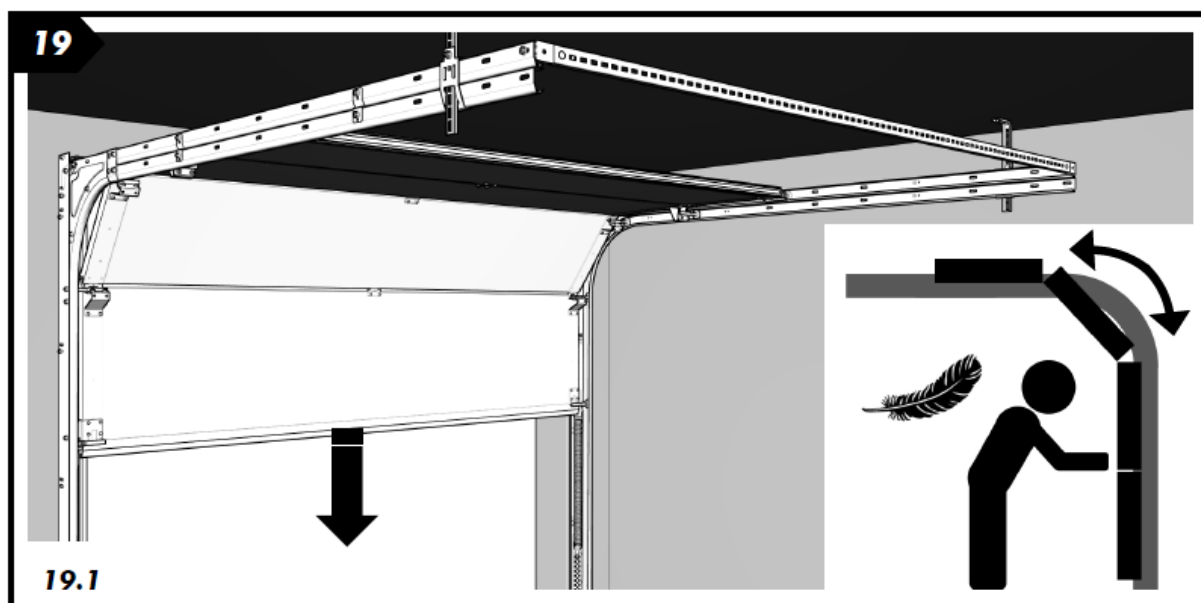


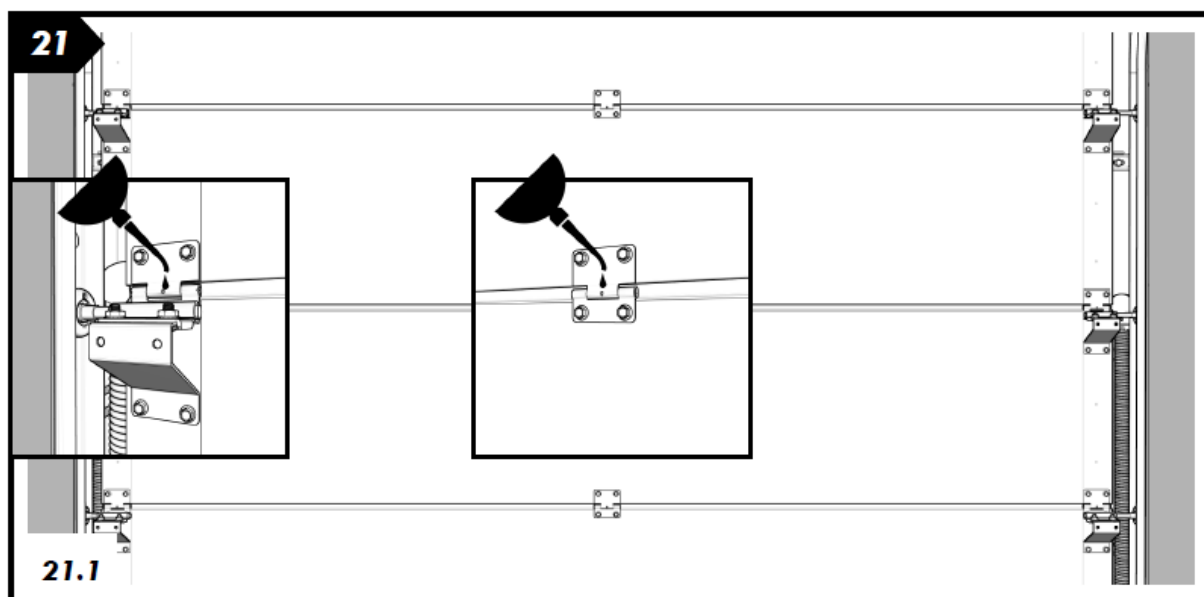
16











OPERATION

Operating the door



WARNING

Danger of injury during door travel

The sectional door closes to the bottom vertically; persons or objects may be trapped.

- When operating the door, make sure that neither persons (children in particular), nor objects are located within the door's area of travel.
- Always keep the opening area of the door clear.

The door must only be operated by properly instructed persons. If the sectional door is adequately assembled and inspected, it can be easily operated and moved.



WARNING

Danger of injury due to improper operation

Persons or objects may be trapped if the door is not operated properly.

- Only open and close the door using the supplied operating elements; these ensure a controlled, smooth action.
- When closing the door, make sure that the latches engage fully and properly.

Power operated doors

The automation of a sectional door requires that special safety regulations be observed. Please consult your door operator supplier.

PARTS EXPOSED TO WEAR AND TEAR TO BE REPLACED

Mandated Test: Durability test conducted at SP.

The worst case scenario was tested = MAX door weight of 120 kg.

The following parts listed below have been replaced during the product's durability test:

- Springs
- Lifting cables

In the case which a spring or a cable rupture occurs, both springs and cables shall be replaced at the same time by the Service Provider.

MAINTENANCE INSTRUCTIONS

An overhead door should be maintained and checked regularly to ensure safe operation and use. In accordance with CEN product standard EN 13241-1.



WARNING

Danger of injury due to high cable tension

Cables and springs are under high tension. Damaged cables or springs may also cause serious injuries.

- Fix the door leaf to prevent uncontrolled movement before replacing damaged cables or springs.
- Be particularly careful when replacing damaged cables or springs.

Danger of injury due to uncontrolled door drops

If the system counterbalancing has not been properly adjusted, this may result in an uncontrolled door drop, which could trap persons or objects.

- Re-tension the springs.

High tension

Springs are under high tension stress and may discharge high forces if they are not secured during tensioning.

- Fix the door leaf in safe way in fully open position before tensioning the springs.

After installation:

- | | |
|--|------------------------------|
| 1. Grease the bearings of the rollers | Trained and qualified person |
| 2. Grease the hinge pins | Trained and qualified person |
| 3. If the door leaf is protected by a protective foil, it must be removed no later than one month after installation | Trained and qualified person |
| 4. Clean the door | Trained and qualified person |

REGULAR MAINTENANCE

After 3 months:

- | | |
|--|------------------------------|
| 1. Complete inspection visually | Trained and qualified person |
| 2. Check balancing system and adjust if needed | Trained and qualified person |
| 3. Grease the above-mentioned points if needed | Trained and qualified person |

Every 6 months (or after every 750 cycles):

- | | |
|--|------|
| 1. Check side seals for damage or wear and tear | User |
| 2. Check top seal for damage or wear and tear | User |
| 3. Check bottom seal for damage or wear and tear | User |
| 4. Grease above mentioned points | User |
| 5. Clean the panels | User |
| 6. Clean the windows (only water wash, do not use cloth) | User |
| 7. Remove dirt and waste from the door or its surroundings | User |

Every 12 months (or after every 1500 cycles):

1. Check or test the fixation of the springs to the hook spring bracket	Trained and qualified person
2. Check the balance of the door and adjust if needed	Trained and qualified person
3. Check the cables for damage or wear and tear	Trained and qualified person
4. Check the cable connection points on cable hook and bottom bracket	Trained and qualified person
5. Check the roller for wear and free moving space	Trained and qualified person
6. Check the hinges on breaking	Trained and qualified person
7. Check the panels for damages, wear and rust	Trained and qualified person
8. Check and test the safety edge system with operator	Trained and qualified person
9. Check the manual operation of the door	Trained and qualified person
10. Check the orientation of the moving pulley	Trained and qualified person

After two years (or after every 3000 cycles):

1. Grease the above-mentioned points	Trained and qualified person
2. Check or test the fixation of the springs to the hook spring bracket	Trained and qualified person
2. Check the balance of the door and adjust if needed	Trained and qualified person
3. Check the cables for damage or wear and tear	Trained and qualified person
4. Check the cable connection points on cable hook and bottom bracket	Trained and qualified person
5. Check the roller for wear and free moving space	Trained and qualified person
6. Check the hinges for breaking	Trained and qualified person
7. Check the panels for damage, wear and rust	Trained and qualified person
8. Check and test the safety edge system with operator	Trained and qualified person
9. Check the manual operation of the door	Trained and qualified person
10. Check side seals for damage or wear and tear	Trained and qualified person
11. Check top seal for damage or wear and tear	Trained and qualified person
12. Check bottom seal for damage or wear and tear	Trained and qualified person
13. Check the bottom bracket for wear and tear and damage	Trained and qualified person
14. Check the connections of the track system	Trained and qualified person
15. Check the suspension of the door to the lintel and ceiling	Trained and qualified person

Use for greasing: PTFE or SAE20 or greasing

Use for cleaning: Soft soap with water. Do not use aggressive soap or cloth.

DISMANTLING INSTRUCTIONS

Dismantling can only be performed by a qualified service providers and competent service technicians.

